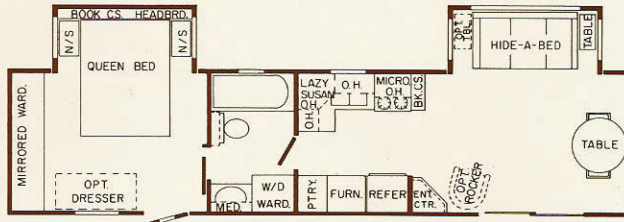




8' Wide Park Models

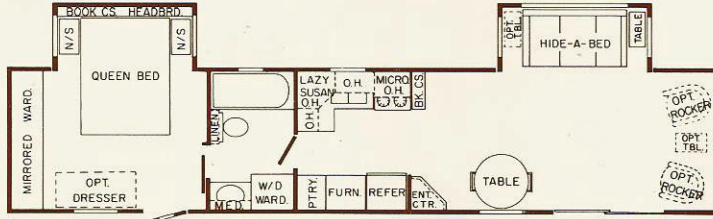
35' RENO

AXLE WT. 6520
HITCH WT. 1270



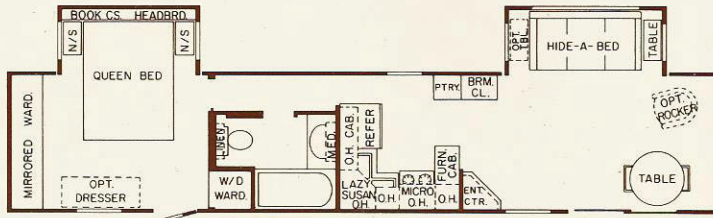
40' DENVER

AXLE WT. 6820
HITCH WT. 1420



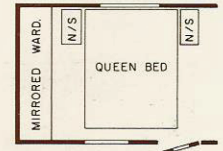
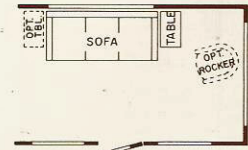
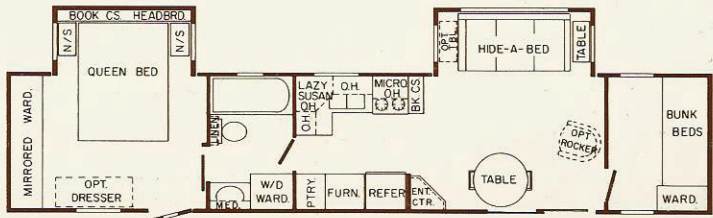
40' SAN DIEGO

AXLE WT. 6800
HITCH WT. 1410



40' FT. WORTH

AXLE WT. 6790
HITCH WT. 1530



MODELS SHOWN WITH OPTIONAL SLIDE-OUT

SPECIFICATIONS

• = STANDARD O = OPTIONAL

CHASSIS AND CONSTRUCTION	
I-BEAM - 8" reinforced at axle area w/2x2 structural tubing	•
HITCH - detachable	0
TRIPLE brake axles	•
WHEELS 6 lug painted, with Goodyear tires	•
SPARE TIRE, carrier and vinyl cover	•
CHROME wheels	0
SHOCK absorbers - 1 pair each axle	0
UNDERBELLY upgraded Polymax	•
TIE DOWN storm straps	•
FLOOR & ROOF framing 2x4's 16" on center	•
CEILING - interior height 7'6"	•
SIDEWALLS 2" reinforced at windows and doors	•
FLOOR DECKING 3/4" Tongue & Groove plywood	•
LINOLEUM in kitchen & bath - Congoleum "no-wax"	•
CARPET with 3/4" pad in LVR & BDR - jute backed nylon pile	•
CARPET throughout with 3/4" pad - jute backed nylon pile	0
SIDING - Yoder side metal treatment resists buckling - .019" Aluminum	•
SIDING - Fiberglass - .045" Filon ribbed fiberglass laminated over 1/4" plywood	0
BAY WINDOW front (NA Fort Worth)	0
SLIDING glass door - with insulated glass	0
STORM WINDOWS	0
DEAD BOLT and screen on entry doors	•
ROOF - one-piece seamless EPDM rubber roof bonded to 1/4" plywood	•
INSULATION Owens Corning R-11 fiberglass roof & floor	•
INSULATION Owens Corning R-5 fiberglass sidewalls	•
FOMECOR® by Monsanto over fiberglass insulation (NA with fiberglass sides)	0
PLUMBING AND HEATING	
WATER HEATER 20 gallon electric	•
WATER HEATER 10 gallon gas/electric	0
KITCHEN SINK large residential-size porcelain double bowl	•
KITCHEN FAUCET single lever with spray nozzle	•
FILTER - water filter system (kitchen) with gooseneck faucet	0
PREWIRE and plumbed for optional washer/dryer	0

PLUMBING AND HEATING — continued	
WASHER & DRYER Kenmore compact stack-type	0
BRASS decor in bath	•
TOILET — house-type china toilet	•
TUB & shower 27x54 w/1-piece tub surround & sliding door	•
WATER SYSTEM self-contained (includes marine toilet, 50 gal fresh water, dual 40 gal. waste tanks & demand pump)	0
LP BOTTLES dual 40# with auto regulator	0
FURNACE 40,000 BTU with floor ducts	•
FURNACE 55,000 BTU with floor ducts (NA San Diego)	0
FURNISHINGS	
TIP-OUT or power slide-out in BDR	0
TIP-OUT or power slide-out in LVR	0
SOFA	•
HIDE-A-BED (STD w/LVR tip-out/power slide)	0
SWIVEL ROCKER	0
SWIVEL ROCKER/recliner	0
OTTOMAN	0
TABLE Hi-lo drop leaf (STD w/LVR tip-out/power slide)	0
END TABLE oak with shelf and brass trim	•
EXTRA OAK END TABLE with shelf and brass trim	•
CHINA CABINET with decorative glass door	•
DINETTE TABLE with 2 chairs, 36" diameter	•
EXTRA dinette chairs	0
QUEEN BED (with steel frame) & 2 night stands	•
TWIN BEDS (with steel frames) & 1 night stand	0
MATTRESS(ES) therapeutic upgrade with 20 year guarantee	•
PILLOWS (set of two)	•
BEDSPREAD(S) matching quilted fabric with pillow roll	•
DRESSER 4-drawer (with BDR tip or slide-out only)	0
SAFETY AND CONVENIENCE	
SMOKE DETECTOR	•
FIRE EXTINGUISHER #5: BC	•
SAFETY CHAINS — dual — quick disconnect	•
BREAK AWAY safety switch	•
PATIO LIGHTS	•
COUNTERTOPS roll-formed with backsplash kit & bath	•
PANTRY with can rack	•

SAFETY AND CONVENIENCE — continued	
BREAD BOARD — Maple with cutlery storage drawer	•
DRAWERS with dual track suspension hardware	•
CLOSETS — aromatic cedar floor in closets	•
ELECTRICAL AND APPLIANCES	
POWER CORD — 50-amp	•
WIRED for built-in microwave	•
MICROWAVE - Dometic w/push-button control, digital clock	0
RANGE — free-standing 24" gas range and oven with glass door, clock and timer	•
RANGE — free-standing 24" electric range and oven with glass door, clock and timer	0
REFRIGERATOR Kenmore 14 cu. ft., 2-door	•
REFRIGERATOR Kenmore 16 cu. ft., 2-door	0
ICE MAKER KIT for 16 cu. ft. refrigerator	0
GARBAGE DISPOSAL	0
DISHWASHER 18" Kenmore compact size	0
FOOD CENTER Nutone with blender and motor unit	0
VACUUM built-in w/30" hose, std nozzles, turbine hand brush	0
AM/FM stereo cassette with 4 speakers	•
WIRED & FRAMED for roof air conditioner	•
WIRED & FRAMED for second roof air conditioner	•
AIR CONDITIONER 13,500 BTU roof-mounted (heat strip 0)	0
AIR CONDITIONER 7,000 BTU roof-mounted	0
TV jacks and outlets in LVR & BDR	•
PARK cable connection	•
TV ANTENNA mast mounted	0
EXTERIOR receptacle (1)	•
EXTRA EXTERIOR RECEPTACLES	0
CEILING FAN(S) (NA with air conditioner)	0
PHONE JACK in LVR - flush wall-mounted	0
PHONE JACK in BDR - flush wall-mounted	0
EXHAUST FAN with thermostat at central location	0
SELF CONTAINED electrical and appliance package (includes #2800 RV refer, 45-amp converter, 12V lighting & stereo, RV 4-burner range with oven)	0

Standards and options may vary with floor plan