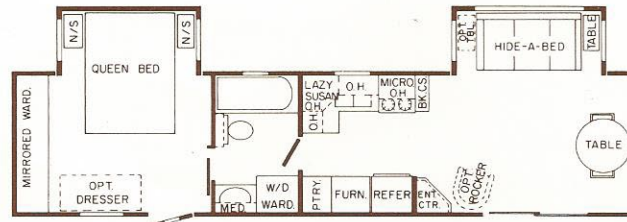




# 8' Wide Park Models

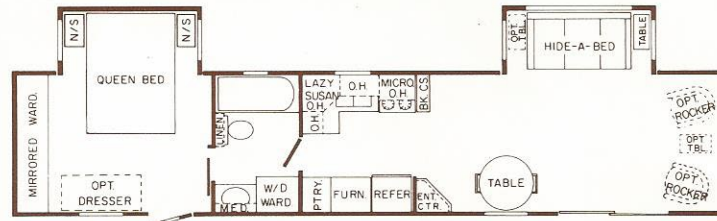
## 35' RENO

AXLE WT. 6520  
HITCH WT. 1270



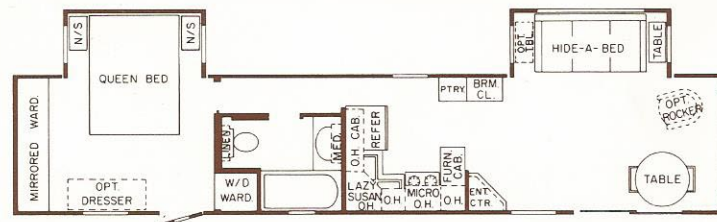
## 40' DENVER

AXLE WT. 6820  
HITCH WT. 1420



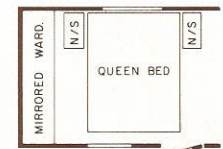
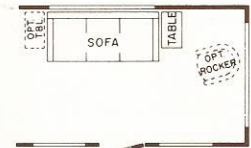
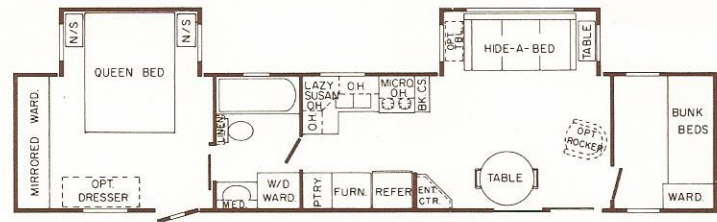
## 40' SAN DIEGO

AXLE WT. 6800  
HITCH WT. 1410



## 40' FT. WORTH

AXLE WT. 6790  
HITCH WT. 1530



MODELS SHOWN WITH OPTIONAL SLIDE-OUTS  
AND OPTIONAL SLIDING GLASS DOOR

## SPECIFICATIONS

• = STANDARD

O = OPTIONAL

CHASSIS AND CONSTRUCTION	
I-BEAM - 8" reinforced at axle area w/2x2 structural tubing	•
HITCH - detachable	O
TRIPLE brake axles	•
WHEELS 6-lug painted, with Goodyear tires	•
SPARE TIRE, carrier and vinyl cover	O
CHROME wheels	O
SHOCK absorbers - 1 pair each axle	O
UNDERBELLY upgraded Polymax	•
TIE DOWN storm straps	O
FLOOR & ROOF framing 2x4s 16" on center	•
CEILING - interior height 7' 6"	•
SIDEWALLS 2" reinforced at windows and doors	•
FLOOR DECKING 3/4" Tongue & Groove plywood	•
LINOLEUM in kitchen & bath	•
CARPET with 5/8" pad in LVR & BDR, jute backed nylon pile	•
CARPET throughout with 5/8" pad, jute backed nylon pile	O
SIDING - Yoder side metal treatment resists buckling	•
.019" aluminum	•
SIDING - fiberglass - .045" Filon ribbed fiberglass	•
laminated over 1/4" plywood	O
BAY WINDOW front (NA Fort Worth)	O
SLIDING glass door - with insulated glass	O
STORM WINDOWS	O
DEAD BOLT and screen on entry doors	•
ROOF - one-piece seamless EPDM rubber roof bonded to 3/8" waferboard	•
INSULATION Owens Corning R-11 fiberglass roof & floor	•
INSULATION Owens Corning R-5 fiberglass sidewalls	•
FOMECOR® by Monsanto over fiberglass insulation (NA with fiberglass sides)	O
PLUMBING AND HEATING	
WATER HEATER 20 gallon electric	•
WATER HEATER 10 gallon gas/electric	O
KITCHEN SINK large residential-size porcelain double bowl	•
KITCHEN FAUCET single lever with spray nozzle	•
FILTER - water filter system (kitchen) with gooseneck faucet	O
PREWIRED and plumbed for optional washer/dryer	O
WASHER & DRYER Kenmore compact stack-type	O

PLUMBING AND HEATING - continued	
BRASS decor in bath w/single lever lavatory faucet	•
TOILET - house-type china toilet	•
TUB and shower 27x54 w/1-piece tub surround & sliding door	•
WATER SYSTEM self-contained (includes marine toilet, 70 gal. fresh water, dual 40 gal. waste tanks & demand pump)	O
LP BOTTLES dual 40# with auto regulator	O
FURNACE 40,000 BTU with floor ducts	•
FURNACE 55,000 BTU with floor ducts (NA San Diego)	O
FURNISHINGS	
TIP-OUT or power slide-out in BDR	O
TIP-OUT or power slide-out in LVR	O
SOFA	•
HIDE-A-BED (STD w/LVR tip-out/power slide)	O
SWIVEL ROCKER - RV size	•
SWIVEL ROCKER - residential-size	O
SWIVEL ROCKER/recliner - residential size	O
OTTOMAN	O
TABLE Hi-Lo drop leaf (STD w/LVR tip-out/power slide)	O
END TABLE oak with shelf and brass trim	•
EXTRA OAK END TABLE with shelf and brass trim	O
CHINA CABINET with decorative glass door	•
DINETTE TABLE with 2 chairs, 36" diameter	•
EXTRA dinette chairs	O
QUEEN BED (with steel frame) & 2 night stands	•
TWIN BEDS (with steel frames) & 1 night stand	O
MATRESS(ES) upgrade - 312 coil - 10 yr. warranty	O
BEDSPREAD(S) matching quilted fabric with matching fabric pillow shams	•
PILLOWS (set of two)	•
DRESSER 4-drawer (with BDR tip or slide-out only)	O
SAFETY AND CONVENIENCE	
SMOKE DETECTOR	•
FIRE EXTINGUISHER - #5:BC	•
SAFETY CHAINS - dual - quick disconnect	•
BREAK AWAY safety switch	•
PATIO LIGHTS	•
COUNTERTOPS roll-formed kit & bath	•
PANTRY with can rack	•

SAFETY AND CONVENIENCE - continued	
BREAD BOARD - Maple with cutlery storage drawer	•
DRAWERS with dual track suspension hardware	•
CLOSETS - aromatic cedar floor in closets	•
ELECTRICAL AND APPLIANCES	
POWER CORD - 50-amp	•
WIRED for built-in microwave	•
MICROWAVE - Dometic w/push-button control, digital clock	O
RANGE - free-standing 24" gas range and oven with glass door, clock and timer	•
RANGE - free-standing 24" electric range and oven with glass door, clock and timer (requires 2 power cords)	O
REFRIGERATOR Kenmore 14 cu. ft., 2-door	•
REFRIGERATOR Kenmore 16 cu. ft., 2-door	O
ICE MAKER KIT for 16 cu. ft. refrigerator	O
GARBAGE DISPOSAL	O
DISHWASHER 18" Kenmore compact size	O
FOOD CENTER Nutone with blender and motor unit	O
VACUUM built-in w/30' hose, std. nozzles, turbine hand brush	O
AM/FM stereo cassette with 4 speakers	•
WIRED & FRAMED for roof air conditioner	•
WIRED & FRAMED for second roof air conditioner	•
AIR CONDITIONER 13,500 BTU roof-mounted (heat strip O)	O
AIR CONDITIONER 7,000 BTU roof-mounted	O
TV jacks and outlets in LVR & BDR	•
PARK cable connection	•
TV ANTENNA mast mounted	O
EXTERIOR receptacle (1)	•
EXTRA EXTERIOR RECEPTACLES	O
CEILING FAN	O
PHONE JACK in LVR - flush wall-mounted	O
PHONE JACK in BDR - flush wall-mounted	O
EXHAUST FAN with thermostat at central location	O
SELF CONTAINED electrical and appliance package (includes AC/LP RV refer, 45-amp converter, 12V lighting and stereo, RV 4-burner range with oven)	O

Standards and options may vary with floor plan