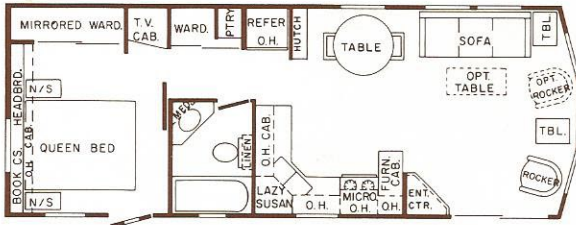


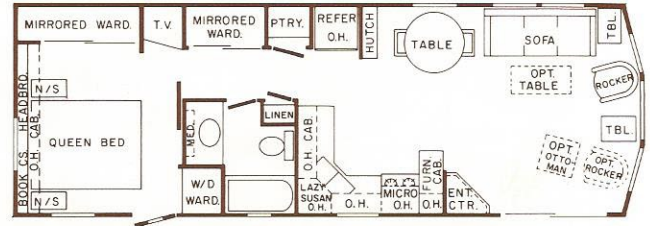


12' Wide Park Models



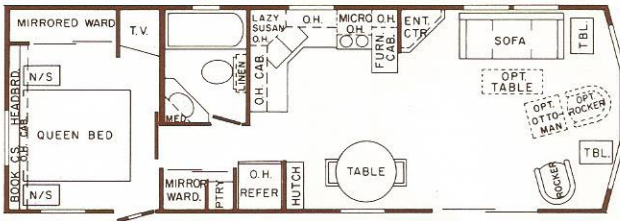
35' GLENDALE

373 SQ. FT.



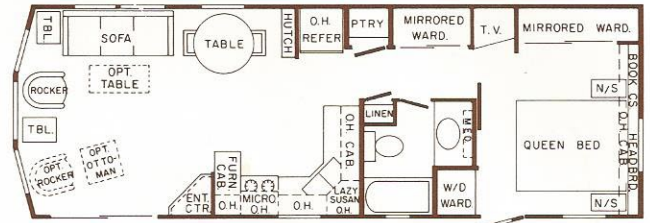
38' PHOENIX

400 SQ. FT.



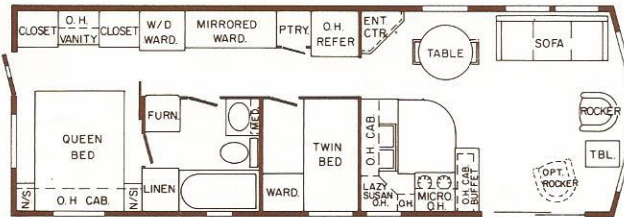
38' WINTERHAVEN

400 SQ. FT.



38' PALM SPRINGS

400 SQ. FT.



38' SEATTLE II

400 SQ. FT.

SPECIFICATIONS

* = STANDARD

O = OPTIONAL

CHASSIS AND CONSTRUCTION	
I-BEAM - 8" w/outriggers & cross members 4'0" on center	*
AXLES - tandem, 1 brake, 1 idler	*
AXLE - BRAKE - replacing 1 idler axle	O
TIRES - 8x14.5 MH Range "D"	*
HITCH - detachable	*
INSULATION - Owens Corning fiberglass R-19 ceiling, R-11 floors and walls	*
CONSTRUCTION - all structural components glued and screwed together	*
FLOOR JOISTS - 2x6 on 16" centers (NA folded models)	*
DECKING - 3/4" Tongue and Groove plywood flooring	*
CARPET jute backed with 5/8" pad in bedroom(s), living room and hall	*
LINOLEUM in kitchen & bath	*
CEILING HEIGHT - 9'0" (8'4" at dropped ceiling in kitchen)	*
WALL STUDS 2x4s 16" on center	*
TIE-DOWN STRAPS (hurricane straps)	*
ROOF RAFTERS trussed on 16" centers	*
WALK-A-BAY - floor to ceiling	*
CATHEDRAL CEILING in living room and kitchen only	O
CEILING - textured w/acoustical spray over 1/2" gypsum board	*
ROOF SHEATHING - 3/8" waferboard w/1-piece EPDM rubber roof bonded to it	*
ROOF SHEATHING - 1/2" plywood w/T-lock roof shingles	O
SIDING - front complete & rear offset gable Stucco hardboard	O
SIDING - Yoder - .019" aluminum sides and back	*
SIDING - Yoder - .019 aluminum on entire coach	O
FOMECOR under Yoder aluminum siding	O
SIDING - double 4 vinyl lap, over Fomecor sheathing	O
SHUTTERS throughout	*
PATIO DOOR with insulated glass	*
REAR DOOR w/deadbolt lock and screen door w/kick panel	*
STORM WINDOWS - self-storing	O
ENTRY LIGHTS - two - one at each door	*
BAY WINDOW LIGHTS - two	*
FURNACE 40,000 BTU/H floor ducted forced air with steel registers	*
LP BOTTLES 40# (8.9 gal.) dual bottles w/auto regulator	O
GAS LINE stubbed to front	*
GAS LINE stubbed to rear	O

CHASSIS AND CONSTRUCTION - continued	
FOLDABLE to 8' wide for traveling (features may change)	O
POWER CORD 50-amp (two cords with electric range)	*
KITCHEN	
MICROWAVE - space maker installed (microwave prep kit std)	O
GARBAGE DISPOSAL	O
RANGE AND OVEN - 24" gas range with hood	*
RANGE AND OVEN - 24" electric range with hood	O
REFRIGERATOR 16 cu. ft., frost-free 2-door	*
ICE MAKER KIT for refrigerator	O
WATER HEATER 20 gallon electric	*
WATER HEATER 10 gallon gas/electric	O
DISHWASHER under counter	O
MAPLE BREAD BOARD - with knife storage tray	*
CUTLERY TRAY	*
CAN RACK (NA in Glendale & Winterhaven)	*
LAZY SUSAN	*
FOOD CENTER Nutonemotor unit with blender	O
KITCHEN SINK porcelain with spray nozzle	*
PANTRY with adjustable shelves	*
CEILING OF LIGHT	*
FILTER - and water purifier with gooseneck faucet	O
CERAMIC TILE - kitchen countertops (includes buffet)	*
BATHROOM	
TUB and shower 27x54 w/1-piece tub surround	*
SHOWER DOOR with tempered glass sliding panels	*
MEDICINE CABINET oak frame tri-view in Phoenix & Palm Springs	*
MEDICINE CABINET - oak frame in Glendale, Seattle, Winterhaven	*
MIRROR - full length with oak frame	*
EXHAUST FAN with light combination	*
LINEN CLOSET with adjustable shelves in Phoenix & Palm Springs	*
LINEN CABINET with towel rail combination in Glendale & Winterhaven	*
FURNISHINGS AND INTERIOR FEATURES	
SOFA	*
HIDE-A-BED - queen-sized with bottom skirt	O
SWIVEL ROCKER - one only, high-back	*

FURNISHINGS AND INTERIOR FEATURES - continued	
SWIVEL ROCKER - extra high-back	O
OTTOMAN	O
TABLE LAMPS in bright brass - total of two	*
COFFEE TABLE oak	*
DINETTE TABLE glass top trimmed in oak w/brass legs	*
DINETTE CHAIRS 2 w/matching fabric seats & cane backs	*
DINETTE CHAIRS extra	O
SWAG LIGHT over dinette	*
QUEEN BED with metal frame and two oak nightstands	*
MATTRESS upgraded - 312 coil - 10 yr. warranty	O
BEDSPREAD matching the curtain fabric	*
TWIN BEDS with metal frame and one oak night stand	O
MATTRESSES upgraded for twin beds w/10-year warranty	O
BEDSPREADS for twin beds in matching fabric	O
PILLOWS (set of two) w/pillow shams in matching fabric	*
DRAPERIES Continental style throughout with sheers	*
MINI BLINDS on kitchen window	*
BUFFET with glass hutch and long-stemmed glass rack	*
TV JACKS in living room and bedroom	*
TELEPHONE JACKS each	O
MIRRORED WARDROBE in bedroom	*
MIRRORED WARDROBE in hall	*
DECORS choice of 6 different color-coordinated decor schemes	*
WASHER & DRYER prep kit (NA in Glendale or Winterhaven)	O
WASHER & DRYER installed, Kenmore stack-type (NA in Glendale or Winterhaven)	O
VACUUM built-in with 30' hose and standard attachments	O
CABLE TV hook up (in rear) for park cable connection	*
TV ANTENNA mast-mounted in rear	O
AM/FM STEREO CASSETTE PLAYER with 4 speakers	*
EXTRA EXTERIOR RECEPTACLE (one standard)	O
WIRE & FRAME for ceiling paddle fan in living room and bedroom	*
CEILING PADDLE FAN installed	O
FIRE EXTINGUISHER	*
SMOKE DETECTOR ceiling mounted	*
DECORATOR WALLBOARD on feature wall of bedroom	*

Standards and options may vary with floor plan.