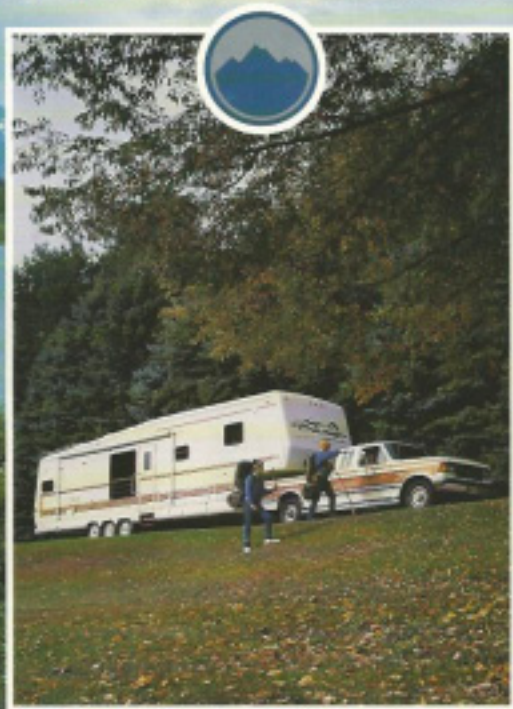


TETON HOMES

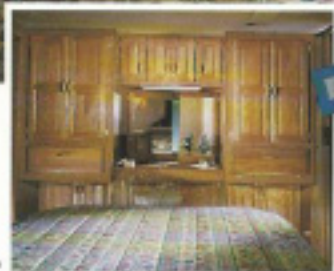
SETTING THE INDUSTRY STANDARD SINCE 1967



1 9  9 2
FIFTH WHEELS

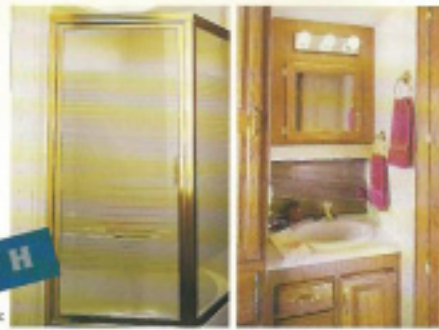


B E D R O O M

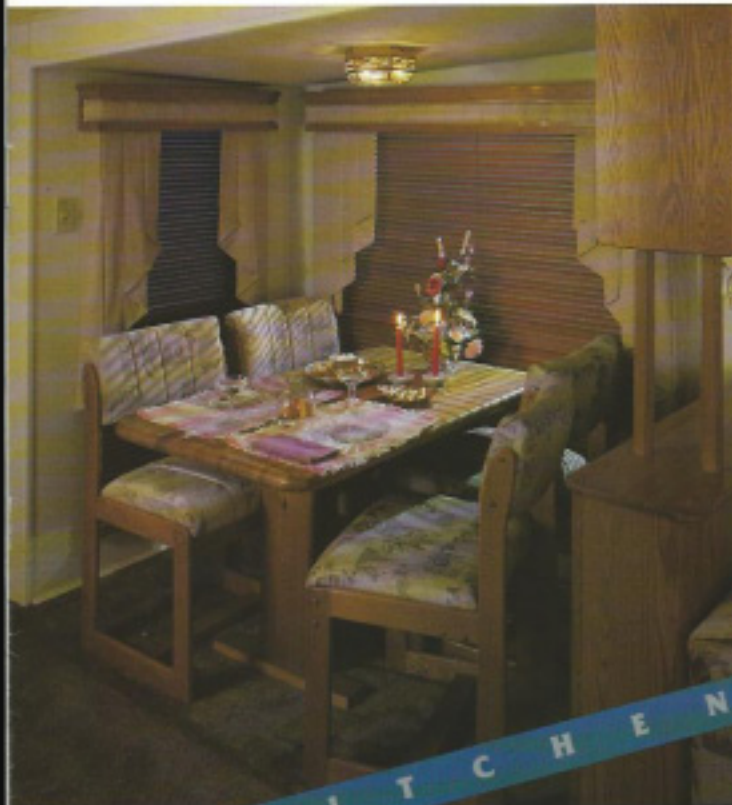


Teton spares no expense to decorate bedrooms and baths in the same manner you would coordinate your own home. This year's "Silver Edition" provides you with even more excellence and beauty than ever before.

B A T H



- A Cedar bedroom slideout
- B Makeup vanity with bathroom slideout
- C Cedar tub
- D Bath vanity



- A Lamy tables
- B Optional parquet floor
- C Optional island
- D Optional island/patio
- E Optional conversion microwave (Specular microwave standard)
- F Optional No-lose blender
- G Optional coffee maker



KITCHEN



Teron kitchens are comfortable and spacious. For the last 25 years, Teron has designed their kitchens to be used. You'll realize that with every meal you prepare. You may never eat out again.

A

B

C

FEATURES



Twenty-five years of listening to their customers creates an indescribable feeling of home in each and every Teton fifth wheel. 191 standards and all the options necessary to make this Teton "Silver Edition" the last home you'll ever need to own.



M Rear trunk area with power cord, TV and phone hook-up

N Storage in aluminum exterior

O Under floor storage with slide-out storage bucket

P Basement storage

Q Two 120 amp, 12 volt batteries with storage

R New for '91 - both LP bottles on one side

S Two fiberglass slide-out storage trays for even more storage

T Cooktop storage area is 11" deep for 1992





- A New optional fold-a-way hand rail
- B Optional satellite dish
- C Optional tinted glass
- D Optional central vacuum
- E 13-watt fluorescent
- F Optional ceiling fan
- G Optional 13-watt panel lights
- H Optional weatherstriper
- I Optional 20" TV and VCR
- J Optional 62" slide roller
- K Optional Dometic side-by-side refrigerator
- L Quartz clock

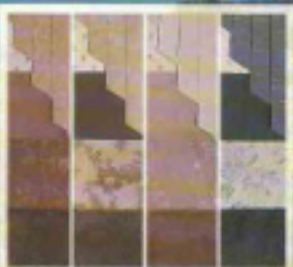


S T O R A G E



Teton realizes that the one thing customers want more of is storage. Last year, no one gave you more. This year Teton even outdoes Teton. With the addition of three extra fiberglass storage drawers and deeper gooseneck area, you can "take it all with you" in a Teton.

TETON LIVING AREA



DECOR

The dream Boots Ingram had in 1967 when he started Teton Homes has surpassed even his grandest vision. The decision to go West was fueled by the desire to build the best 10th Wheel money could buy. Wyoming tough, yet with a beauty unmatched by others. This year, celebrating Teton's 25th anniversary, the Casper, Wyoming manufacturer of luxury fifth wheels, is proud to present to you their "Silver Edition" series.



- A Large size kitchen
- B Tanya living room
- C Traditional size living room
- D Small size kitchen

Standard Features on the 1992 All-Climate Teton Homes' 5th Wheels

SPECIFICATIONS

DECOR

1. The XL skeloseat in the living/dining room area
2. White body
3. 4' depth in XL skeloseat
4. Over 6' of headroom in cathedral ceiling inside the XL skeloseat
5. All furniture shown on floorplans is standard
6. Dinette table w/ upholstered chairs, and tables, coffee table and night stands are solid oak
7. Choice of 4 color-coordinated interiors
8. Entertainment center
9. Display cabinet w/telescope glass door and mood lighting
10. Decorator mirror w/wood frame
11. Battery operated clock in decorator glass door
12. Queen-size bed (60x74 or 80x80) w/12 coil mattress and 10-year warranty (all corners at 45 degree angles for more room in bedroom)
13. Oak headboard
14. Roller shades in bedroom
15. Hinged pedestal storage bed (N/A with optional BDR skeloseat)
16. Bedroom pillows and bedspread with pillow roll and two throw pillows
17. Fabric covered valances in bedrooms
18. Oak valances in living room with color-coordinating fabric trim
19. Oak mini blinds in living room and XL skeloseat
20. Living room throw pillows
21. Solid oak ribbed panel cabinet doors
22. Solid oak drawer fronts
23. Roll-formed countertops
24. Extra heavy duty enamel-drawer roller guides
25. Showware toy drawer
26. Cutlery tray
27. Slide-out bread board
28. Two hardwood cutting board/sink covers
29. Stainless steel air-out sink tray
30. Garbage bag caddy in most models
31. Large lighted pantry w/wood shelves in most models
32. Lazy susans (2) in rear kitchen w/rawl pin to prevent spillage
33. Counter top extensions in corner kitchen models
34. Mini-shelf in rear overhead cabinets of all rear kitchens
35. Metal mesh blinds in kitchens and bath
36. Oak shelf behind sofa
37. Solid oak vanity tops
38. Oak swivel TV cabinet in living/dining room of Williamsburg
39. Oak raised panel doors and drawer fronts in bathroom
40. Decor-coordinated passage doors
41. Full-length dressing mirror built into a bathroom door
42. Slide-out swivel bedroom TV shelf in most models
43. Otter 13-cup washable coffee panels w/leam backing
44. 32-ounce heat set polyester carpet w/1 year warranty
45. 9'x9' Rebound carpet pad
46. Linoleum who-war finish in kitchen w/1 year warranty
47. Linoleum at entryway wherged throw rug

CRANKS

48. Ductor 6000# seats
49. 3000# multi-leaf spring on each side on the door side
50. 2000# multi-leaf spring on each side on the slide-out side
51. Two shock absorbers per axle
52. 12-14"x3-30" heavy duty electric brakes on each hub
53. Tandem axle seats - 16.5" tires - on 34 footplans
54. Tri-axle seats - 16" tires - on 37' and 40' footplans
55. Spare tire wires
56. 8-lug painted rims
57. 12" I-beam axle on main frame
58. 12" red and angle crossmembers
59. Forged 18-gauge x 18-31" steel outriggers
60. 2" x 6" 11-gauge steel tubing in gooseneck super structure
61. Rails to gooseneck gusseted 10-gauge steel
62. 1/8" steel rear trunk plates
63. 3/16" steel plate in generator compartment
64. 1/4" steel plate skid bars
65. BDR extended pin box with 15,000# rating
66. Triple load-up straps powder coated to prevent rusting
67. Fast-acting electric independent jack w/bumper shock rear floor
68. BDL rear stabilizing manual independent jacks w/3" travel
69. All slide-out components part of the chassis - (BDR slide-in bed base)
70. Two "doc screw" drives slide-out power vents
71. Two telescoping 2" slide-out support tubes w/ roller bearing support
72. Manual slide-out crank override
73. Fiberglass one-piece bumper w/continental spec tire lift above
74. Red oxide primer on all painted areas of frame to prevent rusting

CONSTRUCTION

75. Completely enclosed and insulated underfloor w/ R11 + 5/8" polyboard
76. One-piece seamless polyethylene underbelly
77. Holding tanks supported w/1" steel tubing and 5/2 mm plywood
78. Full-size access panels for holding and waste lines
79. 1-1/2" polystyrene insulation around holding tanks
80. Floor and sidewall decking 1/8" thick oriented strandboard/Structurwood w/10-year warranty against delamination
81. Raised bath floor 3/8" thick Structurwood w/wood liner on bottom
82. Gooseneck decking 5/8" tongue and groove plywood
83. Roof decking 5/8" thick oriented strandboard/Structurwood
84. Minimal 2" framing lumber in side walls, end walls and sidewalls
85. Two 1-1/2" x 3" steel tube headers over XL skeloseat
86. 5/8" expanded polystyrene board laminated to all interior framework
87. 3 mm decor paneling laminated over 5/8" polystyrene board
88. Box spring trussed roof has 1" structural aluminum tubing
89. Wall insulation R5 fiberglass + 5/8" polystyrene board

90. Endcap wall insulation R11 fiberglass + 5/8" polystyrene board
91. Ceiling insulation R15 fiberglass + 5/8" polystyrene board
92. Exterior siding: D40" Fiberglass laminated to base w/10-year warranty
93. End caps, undercap, underlock and trimmer skirts are one-piece gel-coated fiberglass
94. Expanded polystyrene insulation board is covered with a foil vapor barrier on one side and back paper on the other
95. EPDM rubber roof w/10-year warranty
96. Dark tinted, flush-mounted, automotive-style safety glass windows w/india corners and interior clamp steps

PLUMBING

97. Polybutylene water lines with copper fittings and enclosed low-joint drains
98. 70-gallon fresh water tank
99. 40-gallon grey water tank (rear kitchen w/2 tanks)
100. 40-gallon black water tank
101. 10-gallon gas/electric water heater w/Direct Spark Igniter
102. All tanks enclosed within heated floor area
103. Semi-flush system for grey and black water tanks with vacuum breaker
104. Dump valves enclosed w/wide access
105. Double bowl porcelain sink in kitchen
106. Porcelain steel sink in bathroom with pop-up stopper and overflow
107. One-piece fiberglass tub/shower w/comfort seat and stainless-steel enclosure
108. Single lever brass tub faucet
109. Single lever brass shower faucet
110. Solid brass single lever faucet with 2-year warranty
111. Residential-type faucets - kitchen single lever
112. Water filter system
113. Washer and dryer prep
114. 12-volt demand water pump with Shurflo accumulator
115. Direct city water hook-ups
116. Otter toilet with residential toilet seat and lid

LP & HEATING

117. Dual 40# LP bottles w/wright gauges (both on side of coach)
118. Pressure regulator w/automatic bottle changeover
119. LP leak detector
120. Smoke detector
121. Dual 15,000-BTU forced air furnace on 37' and 40' models
122. 41,000-BTU forced air furnace on all 29' and 34' models

INTERIOR ELECTRICAL

123. 12-volt marker and directional lights
124. 12-volt break-away safety switch
125. 12-volt baggage compartment lights
126. Bargman T-way connector
127. Two 105-amp deep cycle 12-volt batteries in fiberglass chassis in tables wrap area
128. Two panic lights (one each side)
129. Pre-wired for solar panel
130. 12-volt lighted entry assist handle
131. 12-volt hook light
132. 12-volt entry step light
133. 50-amp power card *
134. Cable TV hook-up * (N/A - all in same compartment)
135. Telephone hook-up *
136. Two exterior receptacles - one front side, one rear side
137. 75-amp ferro-resonant power converter w/battery simulator
138. Betacable slide-out room power card on steel guides

INTERIOR ELECTRICAL

- 130. 12-volt master disconnect switch
- 140. Fluorescent ceiling lights
- *141. Systems monitor panel w/DSI water heater switch
- 142. Lighted pantry
- 143. Lighted wardrobes
- 144. Powered roof vent in bathroom toilet area
- 145. Pre-wired for optional powered roof vent (Eatonite Fan)
- 146. Wall switches for all overhead lights labeled
- 147. 12-volt breaker systems for all interior components
- 148. 12-volt receptacles at TV locations
- 149. 120-volt breaker system
- 150. GFI breaker in bedroom and kitchen
- 151. Pre-wired for 2nd A/C unit (OFT 2nd A/C will be fed into main duct)
- 152. Pre-wired for optional washer/dryer
- *153. 120-volt recessed directional ceiling light(s) in living room ceiling above recliner position(s) with dimmer switch(es)
- *154. 120-volt polished brass wall mounted dual candlelike lights each end of hide-a-bed with dimmer switch
- *156. 12-volt fluorescent above sofa
- *147. 120-volt octagonal ceiling light above chaise with dimmer switch

EXTERIOR

- 157. Roof rack and ladder
- 158. Baggage doors w/humb and key latches carpeted and w/12-volt lights
- 159. Large rear trunk for spare tire, power cord, TV and glove box(es)
- 160. Large trunk behind sofa w/humb and key locks (except Williamsburg)
- 161. Rear rock shield/drawing (front on Williamsburg)
- 162. Flush mounted wrap-around tail lights
- 163. Mechanical door bell
- 164. Sewer hose storage built into chassis w/locking hatch door
- 165. Operable rear windows on most models
- 166. Slider windows on ends of XL skidout
- *167. Two fiberglass under-floor exterior storage drawers on door side
- *168. Large 27" x 27" storage area on door side rear gooseneck

INTERIOR

- 169. Dome skylight over tub/shower
- 170. Cedar lined wardrobes (front wardrobe is carpeted)
- 171. Magazine racks in most models
- 172. Long-stemmed glass racks in most models
- 173. Southco positive cabinet door latches
- 174. Brass with oak inlay cabinet pulls including bathroom
- 175. Solid oak wood handles
- 176. Emergency exit window in bedroom
- *177. Emergency exit window behind sofa in living room
- 178. 7' of ceiling height in center living room
- *179. Thumb-pull on raised floor trap-door (only on Casper and Williamsburg)
- 180. Full basement storage under bath (carpeted, lighted, insulated and heated) w/ventilator access on both sides
- 181. Over 6' of headroom in gooseneck

APPLIANCES

- 182. Remote space-maker microwave
- 183. Servel S620 2-way refrigerator
- *184. Wedgewood 4 burner range w/lighter and window in range door
- *185. Danatex 15,000 BTU Brisk Air high-prior-

minor control A/C (OFT 2nd A/C fed into main ductwork when ordered)

TV AND STEREO

- 186. Sony 300-300 12-volt AM/FM stereo cassette w/4 speakers
- 187. Exterior radio antenna
- 188. Pre-wired for optional compact disc player
- 189. Wire(s) solid state fold-down TV antenna
- 190. Wire(s) TV distribution system
- 191. Pre-wired for TV in living room and bedroom

WHEEL-OUT SIZES

	HL	BOX
29' Hartford	13' 2"	5' 0"
*34' San Antonio	13' 2"	5' 0"
34' Livingston	15' 0"	5' 0"
*34' Nashville	13' 2"	5' 0"
34' Austin	13' 2"	5' 0"
37' Baltimore	15' 0"	5' 0"
37' Miami	15' 0"	7' 0"
37' Ringman	14' 0"	5' 0"
40' New Orleans	14' 0"	7' 0"
*40' Dallas	14' 0"	7' 0"
40' Tampa	16' 0"	7' 0"
40' Nait	16' 0"	7' 0"
40' Casper	13' 2"	5' 0"
40' Williamsburg	6' 0"	6' 0"

ALL XL MODELS ARE STANDARD
ALL XE MODELS ARE OPTIONAL
DIMENSIONS NEW OR UPGRADED (FMS FOR 1992)
COMPOSITE "T" VALUES: R25 - Ceiling,
R21 - Floor, R11 - Sidewalk,
R17 - Steps

**SKIDOUT**

- TVET: Swampy Plains, Row
- ILAT: NCHEN: Star
- Oak Fingerprint Floor in Kitchen/Entryway
- Carpet Counter Top w/Oak Trim (Kitchen)
- Carpet Counter Top w/Oak Trim (Bath)
- Carpet Runners (Clear Plastic/Polex)
- Sectional I/D Hide-a-Bed (Tampa Only)
- Day/Night Shades in Lvl/Div
- Day/Night Shades in BDR
- Interior Decor Kit w/Tyton Glasses
- Decor Changes

CHASSIS

- Max-Ride Axles, Tandem (29' and 34')
- Max-Ride Axles, Single (37' & 40')
- Skid Roller (50" Wide)
- Kwikie Electric Steps
- Built-in Floor Sale (50x60")

PLUMBING

- Automatic Wastewater System
- Arctic Insulation w/Heat Pads, Winterizing System
- Garden Shower to replace Garden Tub

HEATING/COOLING

- 2nd 15K BTU Furnace (STD on 37' & 40')
- Gas BR2 Grill w/Meat Enclosure

ELECTRICAL EXTERIOR

- 12v Floor/Well Lights w/ 4 Generators
- Deluxe Security System
- 25-watt Solar Battery Charger (Road)
- Generator prep. (STD w/Generator)
- 20-Gal. Gas Tank for Gen (STD w/Gen)

- 15K LP LiquidPropane Bottle for Gen (STD w/Gen)
- 10 Regret w/Burner and 20-Gallon Gas Tank
- 10 Regret w/Burner and 15K LP Bottle

ELECTRICAL INTERIOR

- 2nd 15,000 BTU A/C w/Aut. Thermostat
- Heat Strip for Central A/C
- Heat Strip for 2nd A/C
- Ceiling Padle Fan (NA on Casper or Williamsburg)
- Fantastic 12-Volt Fan

EXTERIOR

- ALL 9000 Heating
- 6th Window Awning: 1, 2, 3, 4, 5
- Land-a-Hand Folding Exterior Hand Rail
- Pull-out Storage Bin under Bath Floor (NA on 29')

INTERIOR

- Storm Windows (NA on Emergency Exit)
- Loaded Beveled Glass Doors: Lvl Center
- Loaded Beveled Glass Doors: Hatch

KITCHEN

- Slide-Out Pantry (NA on Austin/Ringman)
- Dashed Skylight w/Shade in Kitchen
- Pull-Out Ironing Board in Kitchen

BEDROOM FURNISHINGS

- Rotated BDR
- Slide-Out BDR
- Twin Beds
- Toddler King Bed in BDR Slide-Out (7 S/O ONLY)

FRONT BEDROOM OF CASPER

- Queen or Twin Bed(s)

APPLIANCES

- Connection Microwave: Sharp SpaceMaker
- Burner Top w/Drawers Below (no Oven)
- Servel S620 3-Way Refrigerator
- Danatex 7030 Side-by-Side Refrigerator
- Raised Oak Panel Door for Refrigerator
- Laminate 3-Line Built-in Cabinet
- Raised Oak Panel for Ice-maker
- Dishwasher (NA on Casper or Williamsburg)
- Raised Oak Panel Door for Dishwasher
- Built-in Nason Blender w/Mixer
- SpaceSaver Coffee Maker (NA on Austin/Ringman)
- Built-in Vacuum w/Attachments & 30' Hose
- Stack-type Washer/Dryer (Remote)

TV & STEREO EQUIPMENT

- VCR: RCA Built-in w/Battery
- Color TV: RCA 20" AC Built-in (Living room)
- Color TV: RCA 17" AC Built-in (Bedroom)
- AM2 Satellite Dish & Receiver (includes pre-wire)
- Pre-Wire for AM2 Travel Satellite Dish
- CD: 12v Remotest 10-disc Changer
- 11db Stereo w/Tape & Upgraded Speakers
- Upgraded Stereo Speakers (80 Watt)

MISCELLANEOUS

- Folding Wheel Chairs w/Padded Seats (Set of 2)
- Folding "TIGON" Director Chairs (Set of 2)
- Folding Oak TV Tapes (Set of 2)
- Foldable 8" Oak Exterior Step
- Foldable 12" Oak Interior Step

RECOMMENDATIONS

- *Type Climate: 2nd 15,000 BTU A/C & Storm Windows
- **Cold Climate: Storm Windows

NOTE: NOT ALL OPTIONS, OR COMBINATIONS OF OPTIONS, ARE AVAILABLE ON ALL FLOOR PLANS. Due to future's continue product improvement, specifications and features are subject to change without prior notification or obligation.

Be sure and ask your dealer about Teton's 10-year structural warranty.

† Charges effective 1/1/92



TETON 5TH WHEEL FLOORPLANS WITH EXTRA



25' **HARTFORD** 100 sq. ft. (95 sq. ft. liv. area)



26' **HARTFORD** 105 sq. ft. (100 sq. ft. liv. area)



34' **Austin** 150 sq. ft. (145 sq. ft. liv. area)



34' **Austin** 150 sq. ft. (145 sq. ft. liv. area)



34' **LIVINGSTON** 145 sq. ft. (140 sq. ft. liv. area)



34' **LIVINGSTON** 145 sq. ft. (140 sq. ft. liv. area)



34' **NASHVILLE** 145 sq. ft. (140 sq. ft. liv. area)



34' **NASHVILLE** 145 sq. ft. (140 sq. ft. liv. area)



34' **SAN ANTONIO** 145 sq. ft. (140 sq. ft. liv. area)



34' **SAN ANTONIO** 145 sq. ft. (140 sq. ft. liv. area)



37' **BALTIMORE** 175 sq. ft. (170 sq. ft. liv. area)



37' **BALTIMORE** 175 sq. ft. (170 sq. ft. liv. area)



37' **KEWANEE** 175 sq. ft. (170 sq. ft. liv. area)



37' **KEWANEE** 175 sq. ft. (170 sq. ft. liv. area)



37' **MAMMOTH** 175 sq. ft. (170 sq. ft. liv. area)



37' **MAMMOTH** 175 sq. ft. (170 sq. ft. liv. area)

WEIGHTS SHOWN DO NOT INCLUDE OPTIONS

BEDROOM SLIDE-OUTS SHOWN ARE OPTIONAL

LARGE SLIDEOUTS 13' TO 16' STANDARD



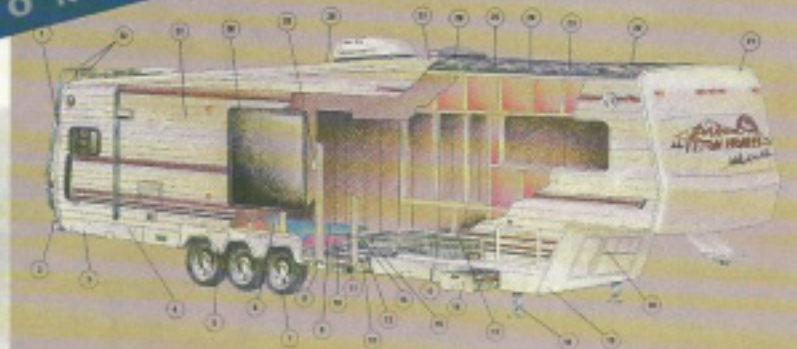
WEIGHTS SHOWN DO NOT INCLUDE OPTIONS

BEDROOM SLIDE-OUTS SHOWN ARE OPTIONAL



Important Note: The dry weights shown are approximate and may vary with construction or options added. Due to Texon's continual product improvement, specifications and features are subject to change without prior notification or obligation.

CONSTRUCTION



TETON OFFERS 10-YEAR ULTRASTRUCTURE WARRANTY ON 1992 MODELS!

- 1 Full fiberglass rear cap with continental spare tire cover
- 2 Fiberglass, automobile-style bumper
- 3 Fiberglass wrap in a fully enclosed underbody
- 4 Reinforcement of exterior storage
- 5 Contoured fiberglass fender skirts
- 6 1/2" expanded polystyrene board backed by foil vapor barrier
- 7 80' L35/85 16L or 9.50x16.5L radial tires
- 8 Triple fold-a-way steps
- 9 1/2" thick oriented strand board - Weyerhaeuser structured - beveled and screwed to the steel
- 10 8-11 fiberglass insulation with 1/2" polystyrene
- 11 10-gauge steel outriggers
- 12 12" high x 3" wide junior I-beam frame reinforced with 4" structural steel tubing at the axle area (2" with Morfyde)
- 13 4" round spiral heat ducts through the crossmembers
- 14 Open rod and angle crossmembers 2" on center (as less)
- 15 One-piece continuous, 3/32" polyethylene underbody below the polystyrene
- 16 Underfloor fiberglass battery tray with nine 105-amp deep-cycle batteries
- 17 2x2 wall framing with full fiberglass insulation
- 18 Electric front jacks with independent foot operation
- 19 Full fiberglass underdeck cap
- 20 Underdeck storage area (optional generator prep-shown)
- 21 Full fiberglass front cap with recessed clearance lights
- 22 4" fiberglass insulation
- 23 General air conditioning duct through the masts
- 24 Ceiling - 1/4" expanded polystyrene board bonded to the aluminum masts with 15-oz. Orlon fabric, 1/2" foam backing, hardwood plywood paneling - all bonded to Kaut paper on top and an aluminum foil vapor barrier bonded to the bottom
- 25 Maximum bowing masts

- 26 Roof fully sheathed with 1/2" decking
- 27 One-piece EPDM rubber roof laminated to 1/2" decking
- 28 Full sloping roof for extra interior headroom
- 29 Lighted exterior assist handles
- 30 All view indicated, tinted picture windows, flush-mounted
- 31 Fiberglass siding bonded to plywood sheathing
- 32 Roof rack and ladder for extra exterior storage

Teton's 10-Year Limited Warranty on the Ultrastructure

Teton Homes offers you their 10-year limited warranty on the Ultrastructure of a 1992 Teton Fifth Wheel, in addition to various other 10-year warranties included on this product.

This warranty is subject to the individual limitations of the specific supply involved, and is subject to their rules and guidelines regarding their products. Teton provides the warranty on the Ultrastructure itself.

Items included in this 10-year warranty package are:

1. The Ultrastructure framework by Teton Homes
2. The EPDM rubber roof by Uniroyal
3. Exterior fiberglass siding by Fibon
4. The 1/2" structural floor by Weyerhaeuser
5. The 1/2" structural roof decking by Weyerhaeuser

Teton Homes warrants its Ultrastructure framework, a unique blend of wood, aluminum and steel for 10 years. The Ultrastructure includes the 12" I-beam frame and the wood and aluminum framing in the sidewalls and the roof. If, during the ownership of the original buyer, any part of the Ultrastructure fails to perform properly because of faulty workmanship by Teton Homes, it will be repaired without charge for either parts or labor if the proper warranty claim procedures are followed. All other items are covered under the standard Teton 1-year limited warranty unless otherwise indicated. See your owner's manual and warranty booklets for further details.

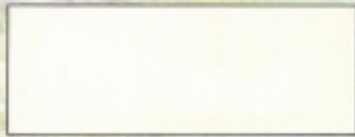
Ask your dealer about the color-coordinated track and roller package.
Ask about the TCJ - Teton's Owner's Club and how you can join today!

Corporate office: 5253 North 9 Mile Road • Casper, Wyoming 82004
Mailing address: P.O. Box 2349 • Mills, Wyoming 82044
Phone: (307) 235-1525
DNC: (307) 573-6027
Plant hours: Call for daily schedule
Plant Closed: 12/29/91 through 1/2/92 and
7/3/92 through 7/13/92 for vacation

Front cover text: Photographed at scenic Mills Campground, Bristol, Indiana.



DEALER



GM 11384-G-10-91 Printed in USA