

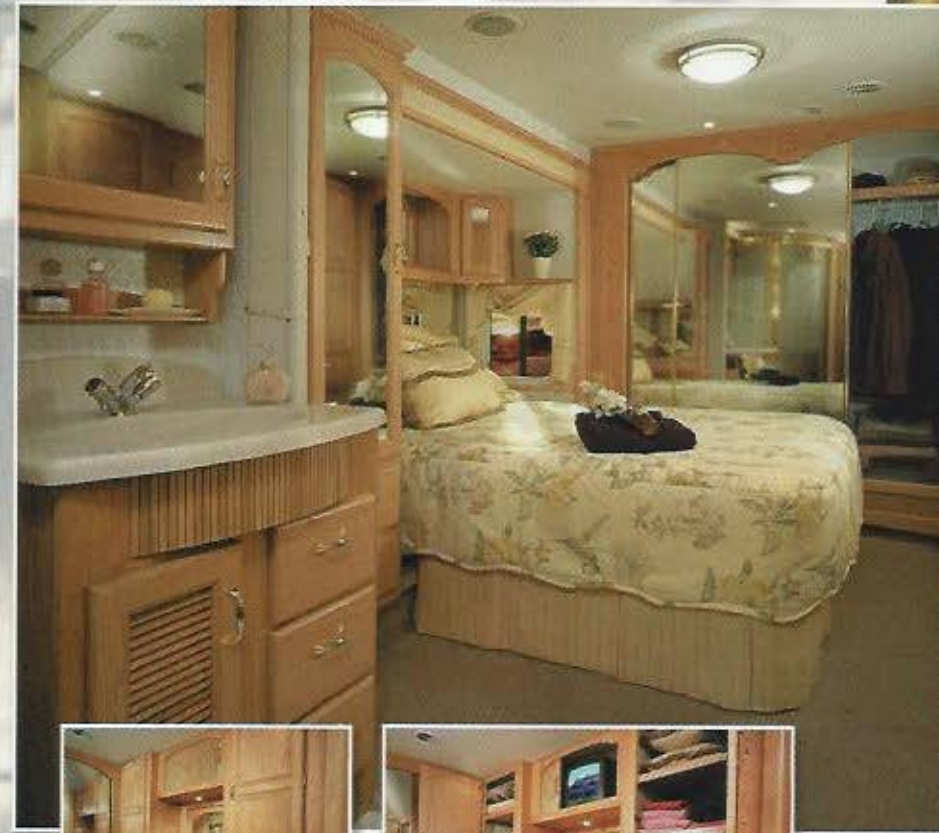


39' Frontier XT3 Royal with Castille decor.

Royal

Unsurpassed
Luxury

Full 8' ceilings (6'7" in slideouts), panoramic windows, stunning decors, and space-adding slideouts make it hard to believe this beautiful home can actually be transported to another location any time you choose. Pictured is Castille decor with handsomely coordinated furnishings from floor to ceiling. Included are a top-of-the-line residential hide-a-bed sofa with patterned fabric and piping that coordinates with swivel glider recliners, a standard oak coffee table and end table with contemporary styling that complements new sculptured window valances, and ultra-plush 66-oz carpeting. Cut glass cabinet doors have brass-capped leaded seams. New light fixtures add classic styling and include recessed directional can lights in the rear overhead. There's also the wonderful luxury of peace of mind; that comes from Royal's 5-year warranty.



Royal's remarkably spacious **LevelOne suite** is a combination master bedroom and bath on one level for the ultimate in residential styling and convenience. The suite has 6'7" of headroom throughout and is extraordinarily well equipped for complete comfort.

At the top right is Teton's large lavatory and medicine cabinet. Patent pending solid surface counters feature an integrated sink and back-splash. Bathrooms are spacious with a house-size radius shower stall with a frosted dome skylight, a china toilet, oak valances and a residential brass and chrome faucet. Depending on the model, a linen closet is located between the bed and bathroom.

Depicted in the 2 small inset photos above are the optional shirt closets in place of the standard 6 drawer dresser arrangement. The left hand shirt closet next to the front mirrored wardrobe also has the optional drawers and shelves, the right hand shirt closet does not. A pull-out hamper is still included under the right hand shirt closet next to the bank of 6 recessed drawers. In between the shirt closets is a make-up alcove with sliding mirror that conceals a window. Above the make-up alcove is a sleek tambour door that hides an optional 13" TV. Residential mattresses in queen or optional king size (depending on the model) carry a 10-year warranty. Shelves and cabinetry around the bed increase function and the inset mirrors provide a feeling of openness.



A convenient pull-out hamper (left), located in the full wall dresser, is vented for air circulation. The hamper is standard in all Teton Homes, but varies in size depending on the model.