



"A FAMILY OF FRIENDS"

A PUBLICATION OF TETON CLUB INTERNATIONAL

It's International Rally Time!

Inside This Issue . . .

- International Rally News
- President's Message
- Can You Be Seen?
- Install A Keyless Entry in Your Coach
- Refrigerator Cooling
- Periodic Toilet Maintenance
- Welcome New Members
- Water Leak From Bathroom Vent.
- Regional News
- Rally Applications
- **AND MORE . . .**

The opinions expressed in this publication are those of the authors and do not necessarily reflect the viewpoints of Teton Homes, Teton Club International, or any of its officers.

Any technical advice is not intended to substitute for the advice of a professional mechanic or authorized RV service technician and TCI accepts no liability.

The newsletter is published quarterly in February, May, August, and November. Deadline for articles is the 10th of the month preceding publication. All letters, articles, art, and photographs are subject to editing, alteration, or may be condensed.

Please mail or email all articles to:

George Hooper, TCI Editor
185 Citrus Ridge Drive
Davenport, FL 33837
Email: geoandkay@macfl.com
Phone: (407)340-2597

Hey All you Tetoners out there – we are ready and waiting for you. It's great fun to see the registrations coming in. Some of you we haven't seen in years – how special it will be to see you again. Others we count on seeing once or twice a year. All of you are important to the Teton Club Family. We're really excited that so many brand new owners are coming to our rally – we'll make sure it is a great rally for you. This is the last newsletter before the rally, so hang on to any numbers or directions. you may get in here.

We have a welcome committee coming up with great plans for you, and they want to keep contact with you, so please put your email address on your registration forms as well as any cell phone numbers. We'll call you if we have to, just to answer any questions before hand, and to let you know we're looking for you and we're ready.

If you haven't been to this part of the country, it is truly beautiful and very different from many other parts of California. Our resort is surrounded by mountains, and we are at about 2,000' in the high desert. We are about 18 miles from I 15 freeway on 79 South. If you are coming from the north on I 15 towards San Diego, there will be three off ramps

(Continued on page 2)

Why We Rate Our TCI Rallies A Perfect 10



Rally News Cont'd

in Temecula: Winchester, Rancho California and 79 South. Take 79 South and go east for 18 miles. You will climb 2,000' to the high desert. There will be a stop sign at highway 371 (which turns left to Indio). Stay on 79 south for fifty yards or so as our resort is on the right hand side—Lots of grass, water and white fences.

In Temecula, on 79 South, you will pass Wal-Mart, and many large markets: Ralph's, Stater Bros., Albertsons, etc. At Henry's (wonderful health food, produce etc) stock up if you are in need, as there are very few markets out here. We do have a wonderful restaurant at the resort. George is very reasonable and has an excellent menu. During the rally most of the meals are taken care of by caterers for us but if you come early – you may want to stock up.

Don't forget your golf clubs – the course is beautiful. Also, we are in the middle of wine country, so there are many wineries to visit for you wine enthusiasts. There are even casinos fairly near for you who love to give your money away. Bring your bathing suits, as there are five pools, and one behind the clubhouse where we can play water volleyball if that suits you. Cowboy boots are very appropriate for here as well as your "I LOVE LUCY OUTFIT" for our grape stomping contest.

For new Teton owners, we have many seminars to help you get acquainted with your Teton, and with the maintenance. Many of our club members are very knowledgeable and are so helpful to all of us, so count on learning a lot about your Teton.

We will have new Teton on display by Altman's of Colton, plus we will have an open house afternoon when we can see some of the creative decorating changes or furniture changes others have done. This is really fun and gives us all more ideas.

We've allowed the cut off date to be August 15th to help some of you out. It seems that there are many things up in the air for some of you and we want to encourage you to try to come and be with us. Please get your reservations in soon as this will help us out on this end.

My brain aneurysm surgery went extremely well, praise God, and I am mending daily. Fortunately we have many people who are helping us out, so I won't forget any important details. Having so many surgeries on my brain has caused some fragments of memory to have disappeared – worse than just aging – but of course, age hasn't helped either. I do depend on others to remind me so I've got great help here.

Please, please, please try to come – we'll make room somehow – we just want you here!

Don't forget – the rate for one week before and one week after is \$29.00 a night. Be sure they don't charge you the regular \$60.00 a night. Your reservations for before or after need to be made with the Outdoor Resorts Office (951) 767 0848 - See you in September

DICK AND KATHY DICKINSON #851

Can You Be Seen?

All RVs, including Tetons, are very poorly lit when approaching from the rear in fog or at dusk. Many of us have switched to LEDs to overcome this. A few have

even modified the Bargman lights and inserted LED's behind the lens. This is no longer necessary. Bargman now has replacement LEDs that just plug into the stop, turn and tail light. Installation is less than a minute. The side marker and tail light assembly require you to replace the socket and connect the wiring. This can take from 5 minutes to over an hour depending on whether you chose to fish out Teton's wiring or just to cut and crimp the connections. If you do fish the wires, be sure to fill the holes with a liberal amount of sealant. If I had it to do over I would cut the wires and use crimp connections.

The wrap-around unit only gives a slight improvement over the existing light bulb, but the change in the other lights is dramatic. If you don't mind cutting wires you can save \$10 by installing four 48-86-101 lights. These lights are available from any 2006 RV accessories catalog and probably Camping World.



Taillight LED upgrade Kit #84/86 series 47-86-41, LED Wrap-around clearance light module – RED \$14.39



Taillight LED upgrade Kit #84/86 series 47-84-410, LED stop/Tail/Turn Light red \$31.39

RICK McHUGH #401



LED Taillights #84/86 series 48-86-101, 86 LED Stop/Tail/Turn w/ Black case \$26.19

President's Message

Once again, our club has had a change in the position of Secretary/Treasurer. After the death of Secretary/Treasurer Ed Sullivan in late March, 3rd VP Wayne Ranks assumed the position for the remainder of Ed's term. On the morning of June 7th, I received a call from Wayne, notifying me that, due to an unexpected change in circumstances, he would be unable to continue as acting Secretary/Treasurer, and, in fact, would be dropping out of the club. Under the TCI bylaws, 4th VP Rick McHugh moves up to 3rd VP, and would have had to take over as Acting Secretary/Treasurer for the remaining three months of Ed's term, in addition to now having to advance his rally planning by one year.

After consulting with Rick McHugh, I asked Carole Gilfedder (TCI #64) to step in and fill the position of Secretary/Treasurer until our 2006 election. Carole was our club's second Secretary/Treasurer, having served for two years beginning in 1993, and, along with Stephanie Engel (TCI #316) is one of only two past Secretary/Treasurers who currently remain members of TCI. The appointment of an experienced past Secretary/Treasurer will be of benefit to Kathy Dickinson in her preparations for this September's rally, and save Rick McHugh from having to take on another job for three months at the very same time he had to move up all his rally preparations by a year.

Until after September's election, all Secretary/Treasurer business should be directed to:

Carole Gilfedder
PO Box 866
Sanbornville, NH 03872-0866
Telephone: 603-522-3598 (East coast time)
Cell: 603-520-6097
Email: gilfedder@floridamesh.net

At this September's annual business meeting, our club will be electing candidates of fill 3 board vacancies, namely: 3rd VP, 4th VP, and Secretary/Treasurer.

Now, having gotten through the news, let's turn our attention to the weather. The weather here in the Northeast has been a bit wet lately. The Boston area, the site of last year's

International Rally, has had between 20 and 30 inches of rain in May and June alone, breaking all previous records dating back to around 1872 when record keeping officially began. FEMA has declared parts of Massachusetts, Maine and New Hampshire eligible for Federal Disaster Relief due to the flooding. For those of us in the Northeast, this is certainly going to make us look forward to and appreciate the California high desert where Kathy is holding this year's International Rally.

Past President Ruth Ranke had a banner at her 2004 rally in Tunica, Mississippi proclaiming, "Volunteers Can Do No Wrong" or words to that effect. When you stop and think about it, our club runs on volunteers. There are no paid positions. We are all out there working for the benefit of the club, trying to do the best job we can with what time and resources we have available, all while trying "to have a life" at the same time.

In this, my fourth and final message to you as President, I would like to publicly thank all of our Teton Club Volunteers, both past and present, without whose efforts our club would not be what it is today. I also, wish to appeal to each and every one of you to join us in California this September and seriously consider volunteering for one of the many jobs which need to be done. I know Kathy has some great plans in store for our California Rally, and Carole and I will be looking forward to seeing all of you there.

Until we meet again in California, Carole and I wish you good health, safe travels, and lower fuel prices would be nice.

PETER GILFEDDER, PRESIDENT #64



Peter Gilfedder TCI President

A huge thank you to my Teton Family for all your concern, prayers, calls, and cards during my recent brain surgery. We truly are a family of friends. --thanks so very much to all of you.

In love,

**DICK AND KATHY DICKINSON
#851**

Thank You

I would like to thank Doug Palmer for sending his love and for including Marion in the Memorial Service at the Southeast Rally in Longs, SC.

I would also like to thank all those who sent cards of sympathy. After 53 years of marriage, it was like the bottom had dropped out of my world. In an instant, without warning, he was gone.

My Hondo neighbors, Lois and Dick Angle #260 and Arlene and Don Linc #615 have been a blessing to me. They've been so helpful and supportive during this difficult time.

Love to everyone,

MARGARET LYTLE #1047

Install A Keyless Entry



Exterior: Our lock has a key over-ride. When our fifth wheel goes in for service, we hand the mechanic the key---no need to reset combo after servicing rig.

We hate keys! When we visited the Teton factory two years ago, we asked, "Why no option for a keyless entry system?" After all, it's available on a Toyota--why not on a Teton?

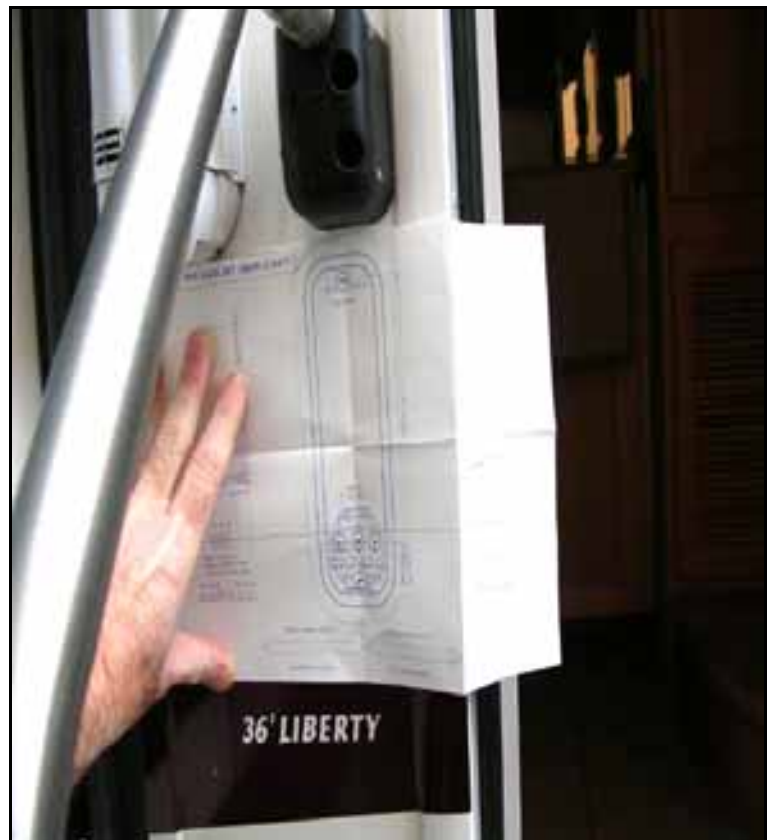
We purchased a system which requires no batteries---just because. It also has a keyed over-ride so others can have access to our coach without giving away our entry code. Order the 2.75 inch set-back for the deadbolt. There's no need to recess the deadbolt into the door jam--there's plenty of space between the door and the door frame. Just don't forget to drill the holes a tad closer to the frame, because you won't be recessing/flush-mounting the deadbolt.

We ordered from Kathy at <http://www.keylessentrylocks.com> or www.locksystems.com (I think this website is being reconstructed). Phone 989-773-2363. Kathy was a huge help with this project--friendly and knows her stuff! Model 2210KA w/ 2 3/4" set-back, Nickel finish (matches the interior). Our system cost about \$125 with shipping.

MARK & SUE BRYER TCI #1311



Interior view shows lockset. Note that the lockset is installed in the wall and not in the door.



Layout: There is no need to recess the deadbolt into the door frame. Therefore, subtract about 1/8"-3/16" for setback. I forgot about this & ended up recessing the deadbolt--- a real pain!

In Your Teton Coach



Drilling outside-in: I used a special drilling jig (from Sears) to make sure all holes were perpendicular



Holes from Interior



Holes from exterior



Teton Door showing deadbolt latch receiver in the door.

Refrigerator Cooling

On hot 90+ days, the 14 cu ft. New Dimension Dometic fridge installed in a slideout is fighting a losing battle. Last summer I installed a 4" Radio Shack cooling fan near the upper vent, which has helped a lot. It is 110 volt, and I just put an on/off switch in the circuit. It keeps the built-in thermostat controlled fan from cycling at all (it doesn't come on until the temp is 120 degrees). This spring, when it was very hot, I had it checked out by a mobile repair tech—and all was within specs, yet it was not keeping up with the heat.

In talking with Nick at the factory, he said they have been adding Styrofoam around the unit in back to fill in as much air space as possible, particularly above the lower plywood baffle that directs air up through the coils. I filled that space using silicone caulk as adhesive. At one end of the back area was a 5" wide space, which I also filled up. It hasn't worked miracles, but has helped. The biggest problem is putting an absorption refrigerator in a slide out with the upper vent out the side wall.

ED AND BEA JOHNSON #1030

Periodic Toilet

No, I don't mean the regular cleaning of your toilet. That's a job some poor, unlucky soul already has in your RV. Periodic maintenance refers to checking, and if necessary, fixing problems that occur due to the vibrating movements of your RV, problems from general use, or from hooking up to water systems all around the country. The inspection looks for looseness and leaks. Actually, if the former isn't caught early, the latter will result.

LOOSE CONNECTIONS & JOINTS

Grab hold of the toilet and gently wiggle it back and forth. Does it move? Do you feel or hear any "clunking?" Is there evidence of any water seeping out from under the pedestal cover? If you have a SeaLand China toilet, there are two or three areas to check, depending on the year of your coach, and model or toilet.

In recent years, Sealand toilets have been braced with two long rods in the back.

This addition was designed to remove some of the stress from the toilet flange. The threaded rods include a turnbuckle type nut at the top.

The turnbuckle screws into the toilet seat bolt and is held fast with jam nuts. Although it's a bit awkward to do, reach behind your toilet (figure A) and check to see if either turnbuckle or any of the jam nuts have come loose.

If you need to tighten them, lift the plastic caps covering the toilet seat screws and tighten, while holding the turnbuckle from below (figure B).

If your toilet is loose, and you have an older model without the rear braces, you will need to remove the pedestal cover and check the toilet flange and toilet bowl joint for leaks and looseness (figure C). Both joints include rubber seals. DO NOT over tighten. Tighter is not necessarily better if there is no obvious looseness.

TOILET WATER LEAKDOWN

Water is held in the toilet bowl as part of the sealing system between the coach and the black tank. A "ball valve" and two rubber-Teflon seals join together to close off the black water tank. Despite regular cleaning of the toilet, mineral deposits can build up on the ball and seals. To clean the ball and seals, follow these steps:

1. Shut off water supply and remove pressure in the toilet line.
2. Put on some rubber gloves and pour/spray a mineral dissolving product (I like Lime Away), on the ball valve. Scrub entire bowl and ball valve. I have had better suc-



Decorative plastic caps cover the toilet seat hold down screws. On newer models, these bolts perform a double duty—they join to bracing rods in the back. To tighten, use a large blade screwdriver and wrench. The turnbuckle is in an awkward place so I use a basin wrench to hold the turnbuckle. You can use a regular wrench or pliers if necessary.

cess with Lime Away than with the cleaning kit Sea Land offers.

3. Hold on tightly to the brush and with your foot, open the ball valve. Spray Lime Away around the edge of the opening. Use your brush to scrub around the edge, and inside as much as you can reach. The ball valve has very little clearance at the front of the toilet, but the right kind of brush should get in there.
4. Close the valve and spray/pour more Lime Away onto the ball valve. Let it sit for 5-10 minutes. If there is still a leak, the Lime Away will seep into it.
5. Use your sprayer to rinse everything well.

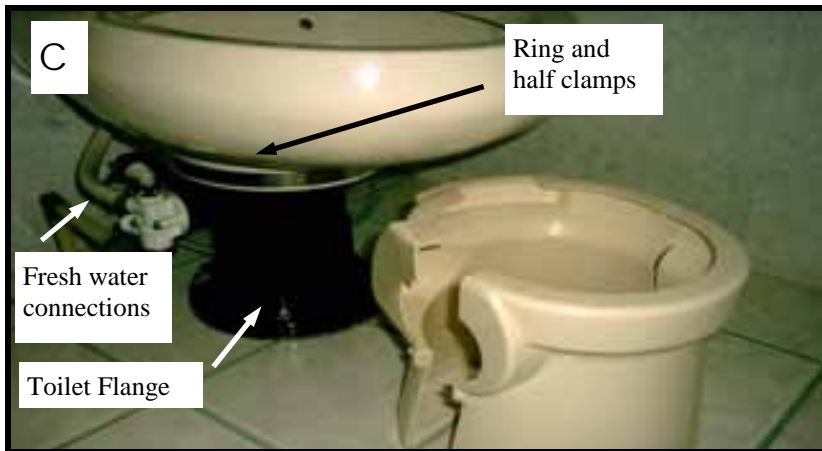
If this procedure does not solve your leak-down problem, try again. If your toilet still leaks water out of the bowl, you will probably have to replace the toilet seals. SeaLand offers a replacement set of Teflon and rubber seals. For more information, see the instructions on the next page, or refer to the February 2003 issue of the TCI newsletter available on our club's website (www.tetoners.org).

GEORGE HOOPER #454

Maintenance

USING SEALAND TOILET CLEANING KIT

An alternate to using Lime-Away and a brush is a cleaning kit from SeaLand. In fact, you may have gotten a sample when you bought your Teton. If you use the cleaning kit, the procedure for cleaning the seal is different. SeaLand provides a tool that looks like a tongue depressor with a thin bristled end. To use, put the SeaLand cleanser on the bristled end, open the ball valve and insert the brush just enough to be part way in the hole. Close the valve, pinching the tool between the seal and ball valve. Scrub all the way around the opening. Open the valve, put more cleanser on the tool, turn it over and repeat the process above.



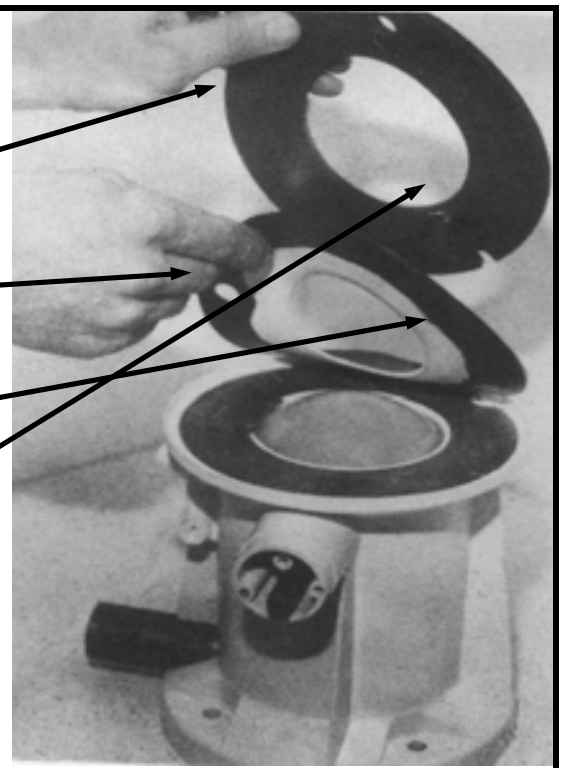
A stiff bristle brush or bottle brush, and mineral dissolving product are necessary to clean the ball valve and seals.

Pedestal cover is held on with one screw. The rear is held by little plastic tabs. Be gentle. Check the flange area for leaks. Tighten just a little at a time to try stop leak or stabilize toilet. The same is true for the ring and two half clamps. Check the fresh water valve for leaks. Tighten as necessary.

Installing New Toilet Seals

(Part: SEA 316140)

1. Spray the top surface of the bowl seal and the bottom surface of the ball seal lightly with silicone spray.
2. Place the thin (*sometimes Teflon covered*) ball seal with beveled inside edge facing down towards the half ball.
3. Align notch on outside edge of seal with pin on outside edge of base.
4. Place thick rubber seal on top of thin seal.
5. All standard models *must have* the holes in both seals aligned a with hole in base rear.



Welcome New Members

NEW MEMBERS

TCl# 1407
Ervin & Laura Schrock
18596 Gunclub Rd
Arcola, IL 61910
217-856-2139

TCl# 1408
Gary & Pam Peterson
219 Rainbow Dr. #11906
Livingston, TX 77399
321-289-0608 321-289-0609

TCl# 1409
Steve & Elaine Bellis
P.O. Box 334
Castle Dale, UT 84513
801-971-0870

TCl# 1410
Loren & Louise Gibson
10843 Number Nine Rd.
Brookville, OH 45309
937-609-2859

TCl# 1411
Paul & Sarah Philbrook
19 Allen Point Rd.
South Hero, VT 05486
802-372-4598

TCl# 1412
Michael & Irene Company
67-175A St.
Surrey, BC V35 9T7
778-908-3343

TCl# 1413
Dale & Veronica Conrardy
29477 Country Road West
Stranton, CO 80836
719-349-1397

TCl# 1414
Larry & Linda Davis
4625 El Capitan
Wichita Falls, TX 76310
940-692-9859

TCl# 1415
Raimund & Peggy Wagner
3600 W. Florida Box 548
Hemet, CA 92545
951-990-1075

TCl# 1416
Alvin & Kumi Johnson
P.O. Box 1551
Winnemucca, NV 89446
775-623-1048

TCl# 1417
John & Sherry Christner
239 Rainbow Dr. #13906
Livingston, TX 77399-2039
512-470-6355

TCl# 1418
Ed & Kathy Weber
435 Hunter Lane
Santa Rosa, CA 95404
707-843-1716

TCl# 1419
Tim & Kathy McGann
PO Box 517
Williams, AZ 86046
928-853-9420

TCl# 1420
John & Sharon Josephson
2703 NE 99th Street
Vancouver, WA 98665
360-573-0259

TCl# 1421
Donald & Kathy Griffiths
6514 235th Ave
Salem, WI 53168
262-441-0065

TCl# 1422
Bud & Pat Alford
1817 Harris Ave
San Jose, CA 95124
408-605-3883

TCl# 1423
Jim & Judy Klimmeck
2040 W. Main St. #1303
Rapid City, SD 57702-2446
310-748-9897

TCl# 1424
Pete McAnena & Sarah Blackwood
155 Rainbow Dr. #5556
Livingston, TX 77399
505-263-8889

TCl# 1425
Will Roberts
PO Box 1866
Cedar City, UT 84721
435-668-6726

TCl# 1426
Dennis & Linda Adams
PO Box 157
Jacksonville, TX 75766
713-702-0895
TCl# 1427
John & Dottie Arnold
PO Box 1666
Fredericksburg, TX 78624
325-374-0448

TCl# 1428
George & Bobbie Stifle
601 S. Hwy. 160, #97
Pahrump, NV 89048
623-225-6806

TCl# 1429
David & Dale Phillips
121 Mary Paige Lane
Santa Rosa, CA 95404
707-523-9621

TCl# 1430
Dennis & Dyan Lucereo
1263 Bouquet Cir
Thousand Oaks, CA 91362
805-496-5053

TCl# 1431
Thomas & Beverly Jones
6523 Fletch Rd.
Land O Lakes, FL 34637
813-996-9927

TCl# 1432
Gary & Deanna Runer
PO Box 4091
Santa Fe, NM 87502
505-471-3626

TCl# 1433
Leon & Carol Wilder
181 Belvidere St.
Laconia, NH 03246
603-387-1990

TCl# 1434
Charles Belknap
PO Box 1608
Burgaw, NC 28425
813-503-0280

TCl# 1435
Don & Clara De Ronde
1916 20th Avenue SW
Wilmar, MN 56201
320-235-0455

TCl# 1436
Jim & Lynne Allred
12031 S. 3085 West
Riverton, UT 84065
801-633-7204

REJOINING MEMBERS

TCl# 788
Clarence & Thelma Williams
PO Box 502
Newport, NC 28570
252-223-4695

TCl# 1156
Roger & Lee Ann Kostman
428 Childers St. #6705
Pensacola, FL 32534
954-290-2378

TCl# 1191
Lisle & Brenda Wilson
PO Box 152
Sandia, TX 78383
361-547-0909

TCl# 1194
John & Elizabeth Crane
5500 N Janice
Pahrump, NV 89060
775-537-1252

TCl# 1434
Charles Belknap
PO Box 1608
Burgaw, NC 28425
813-503-0280

TCl# 1435
Don & Clara De Ronde
1916 20th Avenue SW
Wilmar, MN 56201
320-235-0455

TCl# 1436
Jim & Lynne Allred
12031 S. 3085 West
Riverton, UT 84065
801-633-7204

ADDRESS CHANGES

TCl# 91
Bill & Eleanor Cavanaugh
91 Ege Drive
Carlisle, PA 17015
717-245-2561

TCl# 434
John & Patricia Maxfield
126 Rainbow Drive # 2692
Livingston, TX 77399-1026
425-359-6921

TCl# 626
Mel & Sandra Castle
13988 Paradise Villas Grove
Colorado Springs, CO 80921
719-331-1205

TCl# 865
Rod Howard & Viginia Hyde
221 Rainbow Dr. #12109
Livingston, TX 77399-2021

TCl# 921
Jeffrey & Carole Ann Clague
233 Rainbow Dr #13313
Livingston, TX 77399
530-275-2808

TCl# 1084
Bill & JoAnn Schultz
2580 East Alexis Ct.
Green Valley, AZ 85614
719-330-9255

TCl# 1212
Ronald & Barbara Avery
11444 W. Cottonwood Wash Rd
Pima, AZ 85543-9501
480-391-2388

TCl# 1229
Gary & Kathy Boldt
P. O. Box 6
Lexington, NE 68850
970-978-0111

TCl# 1237
Randy Klauk & Kathy Corgait
39525 Winchester Rd. # 107-328
Murrieta, CA 92563
562-305-4865

TCl# 1240
Roger & Annie Skarie
11587 Lucky Lane
Custer, SD 55730
480-734-4441

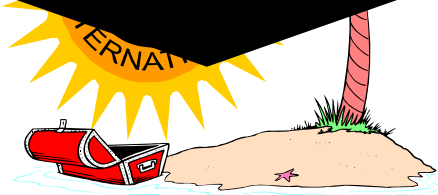
TCl# 1319
Ron & Jan Kell
12602 SE 110th Ct.
Clackamas, OR 97015
503-349-4497

TCl# 1378
Ken & Dixie Madison
411 N 6th St. #1991
Emery, SD 57332

TCl# 1394
Jay & Marilyn Stover
36953 MT. Hwy 35 Lot 84
Polson, MT 59860
770-883-1596

TCl# 1404
Lloyd & Renee Mize
61051 Coyote Canyon Rd.
Anza, CA 92539
951-763-0751

**Hurry, deadline
is almost here!**



Southern California Fun

**THE 17TH ANNUAL TETON CLUB INTERNATIONAL RALLY
September 18 – 25, 2006**

Directions: From I-15 (exit hwy 79 South). East 18 miles on hwy 79. Just past hwy 371 look for the resort on the right. Resort Phone: 888-767-0848

Rally Package Includes . . .

- ◆ 7 Nights Camping at Beautiful Outdoor Resorts Rancho California
- ◆ A Day at Wild Animal Park With Catered Luncheon– Meet the Trainers
- ◆ 6 Catered Dinners-Including Winery Dinner With Grape Stomping Contest
- ◆ 3 Full Breakfasts
- ◆ Seminars and Air Force Museum Tour
- ◆ A Special Day for Ladies

Optional Tours: Choose Only 1 Per Person

Rosarito Beach, Baha. A guided leisurely tour with shopping at Rosarito and Puerto Nuevo with a lobster luncheon. The trip will be 9-6 pm \$94.00 pp. (15 people minimum).

J. Paul Getty Museum & Hollywood Walk of Fame Includes a guided tour of museum plus time for lunch on your own. This trip includes a brief stop in Hollywood to see the "walk of fame." Also the Kodak and Groman's Chinese Theaters . \$55.00 pp. This trip will be 9-6pm. (15 people minimum).

A Day at Lawrence Welk Theater Includes a fabulous buffet luncheon, shopping and a tribute to Frank Sinatra ("My Way") \$47.00 pp. (15 people minimum).

Self guided Visit to San Diego , Park at Old Town, take trolley to harbor – Seaport village, ferry around harbor or over to Coronado Island. Trolleys are around \$2.00, ferries are around \$4.00 depending on trip (*Pay this one your own—don't send money*).

REGISTRATION DEADLINE: AUGUST 15, 2006

NAME: LAST _____ FIRST _____ SPOUSE/COMPANION _____

ADDRESS _____ E-MAIL ADDRESS _____

CITY _____ STATE _____ ZIP _____ TCI # _____

NUMBER OF ADULTS _____ NUMBER OF GUESTS _____ PHONE _____

THIS RALLY WILL BE THE (ENTER NUMBER) _____ *INTERNATIONAL* RALLY WE HAVE ATTENDED.

DO YOU REQUIRE ANYTHING SPECIAL DUE TO HEALTH OR OTHER CONCERNS? _____

BASIC COST: \$595.00 PER RIG (2 PEOPLE) \$196.00 EACH EXTRA PERSON \$399.00 PER RIG WITH 1 PERSON

(NOTE: Owners of lots at Rancho can deduct \$203 for the lot rental from the \$595. For two people it is \$392).

BASIC RALLY FEE: \$ _____ + BAJA TRIP \$ _____ OR GETTY MUSEUM \$ _____ OR L. WELK THEATER \$ _____ = AMOUNT ENCLOSED: \$ _____

NOTES: Make out your check to TCI International (U.S. Funds). Partial payments will be accepted as long as the final payment (including optional tours) is made by the August 15th deadline.

ALL PARTICIPANTS MUST SIGN THE FOLLOWING:

The undersigned hereby releases and agrees to indemnify and hold harmless Teton Club International Club officers of any and all liabilities, claims, losses, damages, injuries and reasonable attorney fees which may rise as a result from, or relate to this rally; or the negligence, omissions or lack of care of its officers during the time period specified above. Cancellation in accordance with TCI by-laws.

Signature: _____ Date: _____

Signature: _____ Date: _____

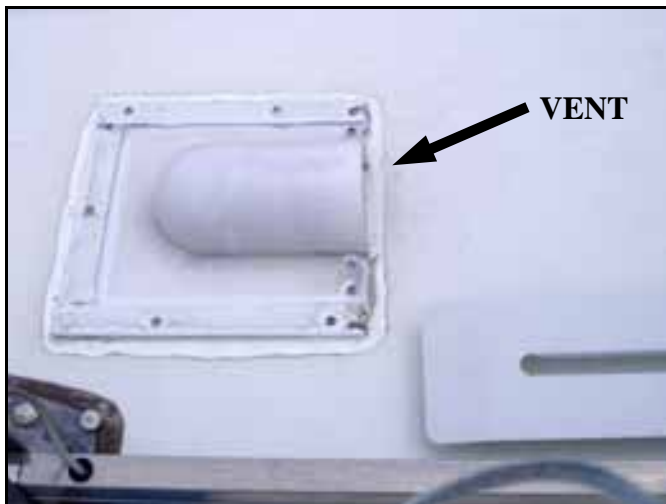
MAIL TO: Carole Gilfedder, Sec/Treas
PO Box 866.
Sandbornville, NH 03872-0866

Water Leak From Bathroom Vent.

Nothing is quite as frustrating as a roof leak that is hard to find. I had a leak with water coming in around the bathroom vent grill. At first, I thought that the rain was coming in through the fan exhaust opening itself. Checking, the inside of the fan area showed no water—yet the ceiling area was quite wet. The water infiltration problem occurred during a rain storm that included plenty of wind.

I went up to the roof a couple times looking for evidence of the leak, but everything was sealed completely. This time, as water was still dripping into the bathroom, I took the fan unit apart from the inside. It was then that I could see water coming in around the outside edge of the large hole cut in the roof for the vent fan hose.

When the roof dried off, I climbed up and began removing the vent cover (which was sealed very well). When the top came off, a small tray remained on the roof—sitting in a puddle of water. On my unit (and perhaps yours) the roof vent comes in three pieces that snap together. The first piece is the tube shaped top. The second piece is a small grill that clips in place



On the roof, the Ventline fan is well mounted for protection from the elements. The edges of the entire unit sit in putty, are reinforced with aluminum and are covered in caulk.



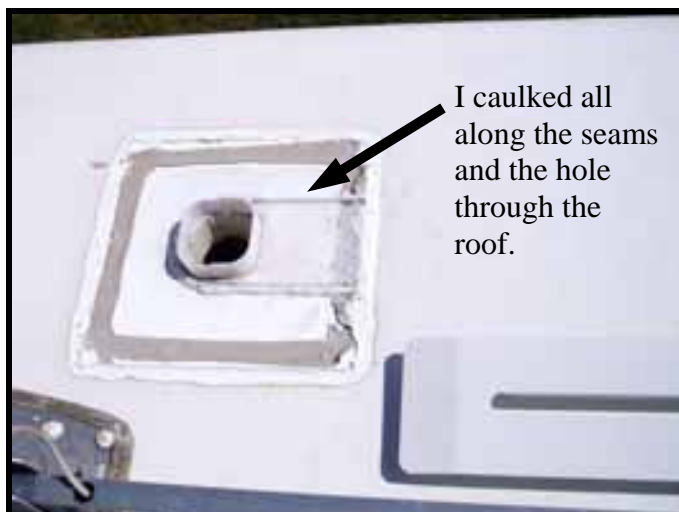
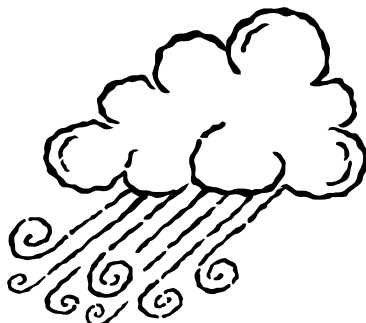
at the front of the opening. It is supposed to keep water out of the vent. The third (lower) piece sits on the roof. It holds the vent fan hose in place. This piece was not sealed to the roof.

What apparently happened during a wind blown rain storm is that water came through the outside grill, overflowed the lip of the lower piece, got trapped between the top piece and the roof, and entered the coach through the hole.

To fix this, I ran a bead of plumber's putty around the roof opening (below the tray), caulked all along the tray's edge, and put caulk over the edge of the seam that joined it to the top piece. So far, all is well . . . No more leaks.

GEORGE HOOPER #454

The top of the vent housing snaps in place over the intake tray. If wind, or a water hose, forces water through the vent grill, water will rise above the not sealed joint where the pieces of plastic join. The hole in the roof where the fan hose passes through is not sealed, so overflowing water enters the ceiling area below.



The final step of repair included sealing the lower tray to the roof so that no water can get under it and into the coach.

SW Regional News



TCI Southwest Goes Hollywood



Rally Fee Includes::

- ◆ Bus tour to Hollywood
- ◆ Paramount Studio tour
- ◆ Grauman's Chinese Theatre
- ◆ Kodak Theatre
- ◆ Taping of a TV show (pending availability)
- ◆ Nethercutt Museum & San Sylmar Vintage Cars and Musical Instruments.
- ◆ 7 nights full hookup
- ◆ 4 breakfasts (1 light)
- ◆ 4 dinners

April 23–30, 2007

Thousand Trails
Solidad Canyon
4700 Crown Valley Rd.
Acton, CA 93510
(661) 269-1740

From Los Angeles: Travel north on I-5 to Hwy 14, then north on 14 to Crown Valley Rd. (23 miles). Exit right on Crown Valley Rd. to the intersection in the old town of Acton (2 miles downhill). Go straight at the stop sign and across the railroad tracks 2.2 miles to the preserve on the left.

From Northern California: Follow I-5 south to Hwy 14 exit then turn left and head north on Hwy 14 to Crown Valley Rd. (23 miles). Exit right on Crown Valley Rd. to the intersection in the old town of Acton (2 miles downhill). Go straight at the stop sign and across the railroad tracks 2.2 miles to the preserve on the left.

MAXIMUM 26 SPACES AND WILL BE BASED ON THE FIRST 26 PAID POSTMARKED APPLICATIONS.

NAME: Last _____ First _____ Spouse /Companion _____
 Address _____ Email _____
 City _____ State _____ ZIP _____ TCI Number _____
 Guest _____ Total Number in Party _____ Telephone _____
 Length of Truck: _____ Length of Trailer: _____
 Do you require anything special due to health or other concerns? _____

REQUIREMENT FOR THOUSAND TRAILS MEMBERS: TT MEMBER # _____

COST: \$395 PER RIG (2 PEOPLE) \$295 PER RIG (1 PERSON) \$125 EXTRA PERSON (IN YOUR RIG)

Amount enclosed: _____ .Pre and post rally costs for non TTN members will be \$32.00 plus tax per night.

Mail Your Application To:

Jacquita Davis
213 Rainbow Dr. #11366
Livingston, TX 77399-2013

Make Checks Payable to:

TCI Southwest Region
(US Funds Please)

For Information Contact:

Olivia & Don Peachey
(661) 305-3500 or chowpeach@aol.com

ALL PARTICIPANTS MUST SIGN THE FOLLOWING:

The undersigned hereby releases and agrees to indemnify and hold harmless, Teton Club International and regional officers of any and all liabilities, claims, losses, damages, injuries and reasonable attorney fees which may rise as a result from, or relate to this rally; or the negligence, omissions or lack of care of its officers during the time period specified above. Cancellation in accordance with TCI by-laws.

Signature: _____ Date: _____

Signature: _____ Date: _____

Please Respond By March 1, 2007

SW Regional News

First Day Fun

The Southwest Regional Rally was at the Danish town of Solvang in Southern California. The first full day started with a wonderful Danish breakfast provided by Altman's Winnebago/Teton. They're located in Colton, CA. and were the closest Teton Dealer. It included freshly prepared Danish Ableskiver, sausage, juices and coffee--- WOW! Thank you Altmans!

We then carpoled to the Elverhøj Museum, which is one of a very few museums outside of Denmark devoted to the Danish culture. Docents demonstrated how they made intricate lacework woven in the traditional ways of the old country—Way beyond my little knitting.

Some of us then went to see a miniature horse ranch and got to see babies that were just born kicking up their heels. Such a beautiful part of the state. We spent the afternoon shopping in Solvang, and then returned to camp for social hour. What a great day spent with friends. Thank you Larry and Doris for a wonderful rally.

JOHN AND SHARON ESS #900



Catered Danish ableskiver breakfast before going to tour the Danish Museum in Solvang.

An Afternoon Lake Cachuma

The afternoon may have been cold, windy, and overcast, but the spirit and mood of this group was definitely running high—Fun, and a little on the rowdy side, just trying to keep warm! Our ranger guide was a young woman in her twenties, very nice, informative and truly enjoyed her job. We were able to spot a red tail hawk's nest, which even had babies in it, a mule deer and many grieves! Grieves are funny little birds whose male species do a dance-off called rushing to show off for the female by "rushing" towards each other over the top of the water - what a sight to see. As in most male-female relationships, she can choose to accept their attentions or not!

VICKI JUMP #1326

New Members Enjoy Rally

My husband, Gary and I were one of the "new kids on the block" couples at the Southwest Teton rally May 2006. When the opportunity to attend came our way, as new Teton owners we jumped at it. From our first introduction to Doris Mills, our wagonmaster, and Jacquita Davis, the chapter secretary, soon after we pulled into our site at Flying Flags RV park, we felt very welcomed, and came to understand we really had joined a special family.

The food was plentiful and delicious. The fun just kept coming from visiting the museums of Solvang, a Danish community, to touring the Vandenberg Air Force Base, to the artwalk in Santa Barbara and that is just a sample of the tours we enjoyed.

We shared past RVing experiences in conversation, laughed together at the evening movie, shared set up and clean up activities together, and even sang together.

Gary and I agree it will be hard to top this rally experience as we look forward to seeing our new friends at the next rally we can attend. Thank you, Tetoners, for making us feel so welcome. We are very glad to have met you all and to have joined this family.

PAM PETERSEN #1408



Rally Members holding some of the donations that were donated to "People Helping People".

Southwest Region Officers.

President: Doris & Larry Mills
Vice President: Olivia & Don Peachey
Second Vice: David Swanson
Sec/ Tr. Jacquita Davis
Historian: Helen Miller

SW Regional News



Rally Master Doris Mills, TCI #893 handing donation to "Leonor" from "People Helping People" that were taken from the silent auction and from some of our wonderful Southwest Members that gave from their hearts. We collected over \$800.00 plus a lot of food, toiletries, etc.

Visiting Vandenberg

Ah, Vandenberg Air Force Base, the launching base for military and civilian space programs, and the centerpiece of our local experiences. Where else can such a visit, supported by our taxes; include miles and miles of freshly greened California hillside framed by 40 miles of ocean front, show us where some of the greatest events on and way off earth have taken place, heard stories about and saw the shoals of the greatest peacetime disaster in American naval history (7 destroyers sunk off shore on the rocks in one high speed wrong formation turn), then been treated to a standup comic way funnier than your ordinary museum guide?

For all the money we pour into our Air Force space command, you'd a thought they had better control over the weather. Waiting for coastal clouds to clear, our two bus loads of Tetoners weathered a lunch at a military bowling alley. Lunch but no launches today. All for the best, because we had to head up the valley back to the famous Solvang for a Danish buffet and street market. The surprise of the day was the huge birthday cake for five our of group, Bonnie Quinn, Carolyn Taylor, Larry Mills, Bill Davis, and John Ess. Prowess at candle blowing and disguising their ages was celebrated by all.

GARY TAYLOR #1299

Southwest Region TCI 2005-2006 Treasurer's Report

Beginning Balance April 1, 2005	\$17,485.22
---------------------------------	-------------

INCOME

Membership Dues '05	80.00
Membership Dues '06	840.00
Membership Dues '07	20.00
Rally 2005	<721.09>
Rally 2006	13,159.59
Badges	<2.50>

<u>Total Income</u>	<u>\$13,376.00</u>
<u>Total Balance and Income</u>	<u>\$30,861.22</u>

EXPENSES

Rally 2005	10,638.02
Rally 2006	1,527.22
Office supplies	34.24
Postage	164.15
Miscellaneous	60.50
Voided Ck 141	<7.14>

TL.Expenses	\$12,416.99
-------------	-------------

Ending Balance 3/31/06	\$18,444.23
-------------------------------	--------------------

Respectfully Submitted,
Jacquita Davis, Secretary/Treasurer,
Southwest Region

Barbeque Day

Thursday of Rally week found the group staying home in anticipation of a barbecue luncheon with all the trimmings provided by Teton Homes. Mary Starr, from the factory, and John Ess representing Altmans Winnebago/Teton addressed the group. Mary talked about all the new and wonderful things that Teton is implementing in the new coaches, and they fielded questions from the audience.

For dinner we had the proverbial "Pot-Luck," but with a twist. The theme was a "My Favorite Recipe Contest" where everyone brought a dish, and we voted for each category. So much good food, so very hard to choose the best. Full and content, we were treated to a movie, *The Long, Long Trailer*, with Desi Arnez and Lucille Ball. What a great day!

SHARON ESS, TCI #900

Ne Regional News

Cruising to Tangier Island

As veteran "rough riders" of the open road, the Northeast Region Ralliers "rocked and rolled" on the Chesapeake Breeze through choppy bay waters to Tangier Island. Our cruise left from historic Reedville, Va., center of the largest fishing industry in the U. S. Narrated by a homebred captain, the cruise was very informative and scenic. Some sought out the windy top deck for a view of the bay, fishing boats, and birds. Others chatted in the enclosed lower deck as the waves swept us to our destination.

Tangier Island, an unspoiled fishing village whose people speak with a trace of an Elizabethan accent, was originally settled by John Crockett and his family in 1686. This historic treasure has maintained its quaint charm with limited modernization. The scenery includes small cottages, fishing shanties, crab pots, fishing boats and nets. There are no complex highway systems, no traffic jams, nor stop lights! In fact, there are only a few vehicles! These islanders either walk, bicycle, motorcycle or ride golf carts to their destination. Our group wandered the narrow streets and village shops or toured the approximately 1.5 mile island by local guide and golf cart.

At Hilda Crockett's Chesapeake House, Ralliers feasted on the famous and absolutely delicious crab cakes, clam fritters, and corn pudding. This restaurant is a definite lunch/dinner spot when visiting Tangier Island.

The day was a delightful step back in time! Even though we "rocked and rolled" to and from the island, the Northeast Ralliers had a lot of laughs and great fellowship on the Chesapeake Breeze and Tangier Island.

LINDA & ED INGRAM #1170



Tetoners board a ferry for their trip to Tangier Island. Although the weather was on the cool side, everyone had a great time.



Lorraine Hummel #677 points to a sign for "Lorraine's Sandwich Shop" on Tangier Island.



Ed Ingram (R) looks on as Past President, Gary Lonstein #975, (C) congratulates Rallymaster, Carol Atkins #55 by passing on the ceremonial Hershey Kiss hat.

Tetons For Sale

2000 Cheyenne XT3 Tradition 38'. New furniture; arctic package, Saratoga beige décor. For pictures go to <http://pg.photos.yahoo.com/ph/mandersenchloe/album?.dir=/c4eb&.src=ph&.tok=ph5AZpEB.4W0zp48>. Mary & Mike Andersen - # 951 Phone 619-787-9571
mmanders2@earthlink.net

2005 Experience Sunrise . 33' like new, natural maple woodwork, Enclosed 27" flat screen TV , surround sound. stacked W/D Mor/ryde, more \$82K. Phone 775-225-3772 , 775-225-3687. Email rjsinwi@hotmail.com. Bob and Verna Schroter #13450

Regional News

NE Region Trip to Ingleside Winery

It was impossible to believe! The whole rally group had lined up for the trip to Tappahannock and the boat ride ahead of schedule! As a matter of fact, all seven of the vehicles pulled out of the campground at 9:10 AM. A whole five minutes early. It must have been the beauty of the morning and the anticipation of a ride on the Rappahannock River.

Arriving at the dock on time, we all boarded the Cap't. Thomas and settled in for the ride to the winery. The sun was warm, the breeze was cool and the twin diesels of the boat purred along as they sucked up fuel at the rate of one gallon per mile for each engine. We were all glad we didn't have to buy fuel for that trip.

Along the way the captain gave us a running commentary about the river and the area. He showed us quite a few bald eagles that lived and nested along the river. What a sight – our national symbol flying over the water and performing aerial acrobatics just for our gratification.

We arrived at the dock after about an hour on the river and our captain, quite a bit younger than the rest of us, after docking the boat, ran up the hill above us and came back with an old school bus for our trip to the winery. After a short ride on the standard shift school bus we arrived at our destination!

Upon disembarking, we lined up for a buffet lunch of cold cuts and/or pulled pork. We ate the delicious lunch in a shaded courtyard next to the winery. Sitting at the umbrella covered tables you would swear that you had been transported to the courtyard of a villa in Italy.

After a few minutes of time in the small but interesting museum which centered on the native Americans from that area, our guide, who was a member of the owners' family, showed us how they made, fermented, bottled and stored the wine. We were all fascinated by the complex nature of making wine. Then, she took us into the tasting room where we were given tastes of wine and the opportunity to purchase some of the wines – quite a few of us did so.



The Captain Thomas is docked, waiting for Tetoners to board for a cruise on the river.

After a leisurely stroll through the extensive and interesting gift shop it was back to the bus and then to the boat. The trip downstream was easy and relaxing. After all, we had a good lunch and little bit of wine in our bellies! We docked, disembarked and queued up for the ride back to the campground. We were a bunch of satisfied and tired campers when we got home!

GARY & HARRIET LONSTEIN #975

Southeast Region TCI 2005-2006 Treasurer's Report

Balance Brought Forward	\$3,092.02
-------------------------	------------

INCOME

Member Dues	700.00
Dangles	35.00
From 2005 Rally	<u>21.72</u>
Total Income	756.72

Total Balance Before Expenses	<u>\$3,848.74</u>
-------------------------------	--------------------------

EXPENSES

Postage and Supplies	374.65
Historian	111.67
Rallymaster Gift 2005	58.46
Rallymaster Fee 2006	<u>448.00</u>
TL.Expenses	\$992.78

Ending Balance 3/2/06	\$2,855.96
------------------------------	-------------------

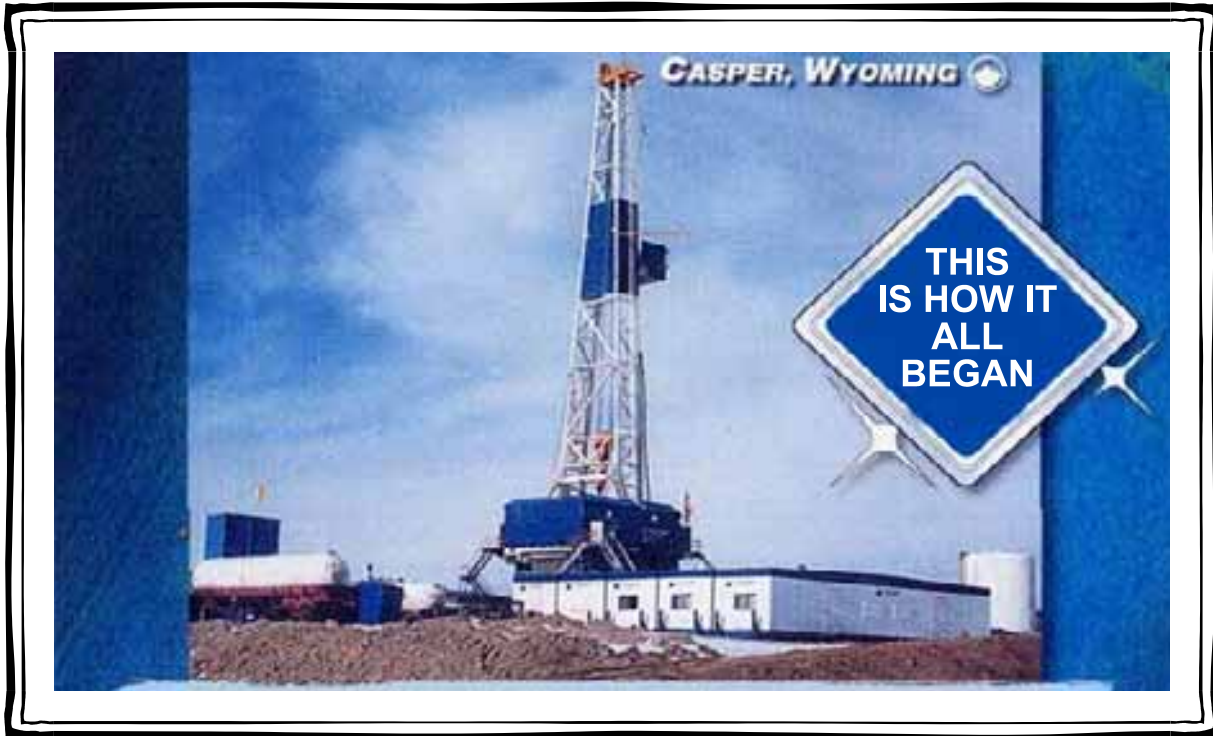
RALLY REPORT

Rally Fees	\$12,070.00
Rally Expenses	10,376.95
Rally Refunds	1,658.00
Transferred to General fund	35.05
Balance 4-25-06	

Respectfully Submitted,
Marv Ranke, Secretary/Treasurer,
Southeast Region

Southeast Officers

President.....	Peter Greig 789
1st VP	Phillip McMullin 583
2nd VP	John Martin 949
3rd VP	Terry Nance 1179
Sec/Treas	Linda Tinney 685



One of the reasons that Teton RVs have a reputation for excellent insulation and rugged structural framing, may be their forerunners—oil field wellsite bunk houses and offices. That's how it all began. Teton built (and still occasionally builds) housing and office units for the oil fields of the West. No wheels on these big 14X60 foot units. They are built to be hauled on flat bed trucks, dumped off the back on to the ground, then drug across the oil fields by big bulldozers.

George Hooper, TCI Editor
185 Citrus Ridge Drive
Davenport, FL 33837

FIRST CLASS MAIL