



"A FAMILY OF FRIENDS"

It's not too late to join a region.

A PUBLICATION OF TETON CLUB INTERNATIONAL

Inside This Issue . . .

- International Rally Update
- Nick Keller Alerts Members With Teton Service Bulletin
- Convert Your Sleeper Couch to A Storage Compartment
- Fan Filters Really Help
- Holding Tank Treatments — Response
- Fly "Old Glory" - Build a Flagpole
- The Tale of the Amana Defrost
- Welcome New Members
- Regional Club News
- Rally Applications
- **AND MORE . . .**

The opinions expressed in this publication are those of the authors and do not necessarily reflect the viewpoints of Teton Homes, Teton Club International, or any of its officers.

Any technical advice is not intended to substitute for the advice of a professional mechanic or authorized RV service technician and TCI accepts no liability.

The newsletter is published quarterly in February, May, August, and November. Deadline for articles is the 10th of the month preceding publication. All letters, articles, art, and photographs are subject to editing, alteration, or may be condensed.

Please mail or email all articles to:

George Hooper, TCI Editor
1407 Edmundshire Lane
Orlando, FL 32806
Email: geoandkay@macfl.com
Phone: (407)340-2597



New Address

Hear Ye! Hear Ye!

It's 7 months to the fabulous 16th Annual TCI International Rally in Boston, and all is well! Come join us at spectacular Normandy Farms Family Camping Resort and experience some of what makes New England a must see/must do autumn experience.

The timing of our rally should put us close to the 50% fall color range, with an abundance of brilliant New England reds and yellows set against an ever changing late summer – early fall green background. For those of you who plan to arrive early, in a typical foliage year, northern parts of Maine, New Hampshire and Vermont have pockets of color by Labor Day. Peak color is typically late September to early October and progresses from north to south, and from the mountains towards the coast. If your plans include traveling around New England after the Rally, I would strongly suggest that you consider campground reservations. Peak foliage season can get extremely busy around New England.

September and October are often thought of as having the nicest weather of the year in New England. The summer humidity has packed its bags and headed for Florida while old man winter is still preoccupied far to our north. Boston, at the time of our rally, should have daytime high temperatures around 75 degrees with nighttime lows around 55. The secret to New England's warm fall weather is the ocean, which reaches its peak temperature just before Labor Day and keeps the land relatively mild through October. In fact, on Cape Cod, one can play golf for a good part of many winters due to this ocean influence.



Our Campground, Normandy Farms, is an easy 2½ mile drive from Interstate 495, the outer
(Continued on page 2)

U.S.S. Constitution The oldest commissioned warship in the world became known as "Old Ironsides" during the war of 1812 when she fought the British Frigate H.M.S. Guerriere

Hear Ye, Hear Ye

(Continued from page 1)

beltway around Boston. There are no low bridges, tunnels, or weight restrictions between Normandy Farms and the interstate. Once at Normandy Farms, be sure to check out one of their four pools. There are three outdoor pools (one heated) and an indoor pool, heated to a comfortable 85 degrees, located on the lower level of the 20,000 square foot lodge. The lodge also has a fitness center, sauna, double Jacuzzi, plus adult and entertainment lofts.

Normandy Farms is also wired for Wi-Fi (802.11b) computer access. This is an extra fee option available by the hour, day, week or month. If this is important to you, please let Carole or me know and we will do our best to put you on a site with good Wi-Fi access.

On Saturday the group has an introductory tour of the Boston area. This is included in your rally fee. Saturday traffic is better than during the week, yet the tourist attractions are all open. We depart Normandy Farms at 9AM. We sightsee, by bus, till 11:30 AM. From 11:30 to 12:45 you will be on your own at Boston's Faneuil Hall-Quincy Market for sightseeing, shopping, lunch. At 12:45 we transfer to the waterfront for a 45 minute Boston Harbor Cruise. Then, it's back to our buses for a tour of Cambridge, with a stop at Harvard Yard; Lexing-

"At 12:45 we transfer to the waterfront for a 45 minute Boston Harbor Cruise".

ton, with a stop at the Lexington Green; and Concord, with a stop at the Old North Bridge. Included in this itinerary will be a brief one-half hour visit to the USS Constitution, our nations oldest commissioned warship. "Old Ironsides" was launched October 21, 1797 and remains a part of our Navy to this day. Every year on July 4th, she turns around in Boston Harbor and returns to her berth, facing in the opposite direction, thus

insuring equal weathering on both sides. Our introductory tour of Boston draws to a close with our return to Normandy farms around 5PM.

We are running two optional tours during the rally, the mansions of Newport, and Nantucket Island. These tours run on different days so you can sign up for both if you wish.

"We are running two optional tours during the rally, The Mansions of Newport, and Nantucket Island.."

The Mansions of Newport tour is by bus from Normandy Farms and is approximately 7 hours in length (refer back to your Nov. 2004 newsletter for more on Newport and Nantucket Island).

The trip to Nantucket Island is by truck pool to the ferry dock at Hyannis, truck parking has been arranged at a cost of \$15.00 per truck, payable when you park. We will all be heading for Nantucket Island on the 9:10 am high-speed ferry from Hyannis. You have 3 return options from Nantucket; this is the reason we are truck pooling. There are return ferry trips in early and late afternoon with the last being in the early evening for any who wish to stay on the island all afternoon, watch the sun set over the ocean, and experience the lights at night returning to Hyannis. We have left the choice of return time up to you and your truck mates.

Now, for one final tour related note, Normandy Farms has a pet-sitting service available, at extra cost, for those who wish it.

Just a reminder, in closing, that Normandy Farms is within driving distance of both Foxwoods and Mohegan Sun Resort Casinos plus there is an upscale outlet mall (Wrentham Village Premium Outlets) one exit north on the Interstate.

Pack your smile and make plans to come to the party with your Teton friends at our big 16th annual TCI International Rally. See you in Boston.

PETER GILFEDDER, RALLYMASTER #64

President's Message

I hope all of you have had a Happy Holiday Season.

Our new web-site, TETONERS.ORG is up and running with Terry Nance as the new volunteer webmaster. His e-mail is: tnance@axs4u.net or webmaster@tetoners.org. If you have any questions you can e-mail him.

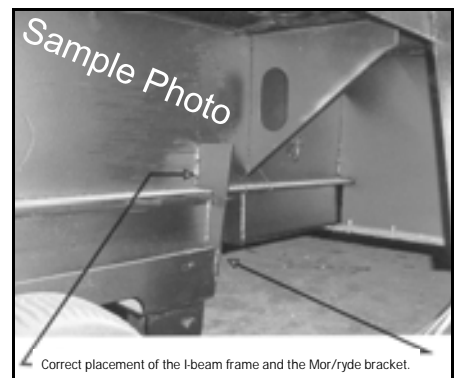
I hope you have made your plans to attend some of the upcoming Regional Rallies, and of course, the International Rally in Boston this September.

Have a good winter – we will see you this summer on the road.

RUTH RANKE # 373

Teton Service Bulletin

Nick Keller from Teton Homes has notified us that Teton Homes and Mor/Ryde have issued a Service Bulletin (#153-101) concerning two problems found on some coaches with the Mor Ryde suspension option (see November '04 newsletter for background). If you own a Teton RV, with Mor/Ryde suspension, built between March 19, 2002 and November 1, 2004, you may be affected by either, or both situations.



Our webmaster, Terry Nance, has loaded four pages of details, photos, and contact information on the club's website, www.tetoners.org. You can visit the website, in the members' section, to download the documents, photos, checklist, and instructions.

GEORGE HOOPER, TCI EDITOR

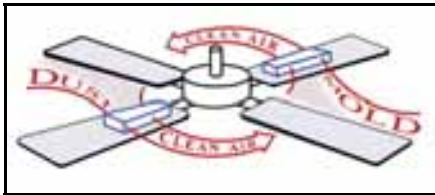
Fan Filters Really Help

Several friends have mentioned that they use Ceiling Fan Air Filters in their RV's. We finally found a pair in Lowes—our Home Depot doesn't carry them.

We have had them on our fan for over a month and they make a difference. We run our fan frequently, and in the past have had a dust ring on the ceiling above the fan. So far no ring. They run about \$3.00 a pair.

I couldn't find the Harbor Breeze brand that we bought at Lowes, but found this site if you would like to see what they are: www.14ushop.com/air/.

MARGARET SERAFIN
#1116



Circulating fan sweeps the filters through the air, filtering particulates in the air.

(One brand, AirWedge, from website above, sells three sets (2 per set) for \$14.99 plus shipping & handling)

Their website says, "AirWedge disposable filters turn an ordinary ceiling fan into an air purifier to keep the home and workplace clean.

In controlled tests AirWedge filters have been shown to reduce airborne room dust up to five times more effectively than air conditioner or furnace filters. Lasting three to six months, AirWedge is a very cost effective way to filter dust and allergens in any room."

Teton Club International Rally Financial Statement Tunica, Mississippi

Tunica Beginning Balance	\$0.00
Total Deposits	\$50,830.00

Rally Expenses

Sams Town Package Price	44,100.00
Food	888.24
Gifts	918.87
Refunds— Rally	830.00
Refunds—Cancellations	2,630.00
Printing	257.50
Miscellaneous	386.98
Postage	47.83
Total Expenses	\$50,731.42

Balance From Rally	\$98.58
Forwarded to "Excess" Acct.	\$98.58

Submitted: Ed Sullivan Secretary, Treasurer

Thank You!



To the more than 70 club members who contributed to our TCI, "Family of Friends" newsletter in 2004—a BIG thank you!

Your notes, articles, and photographs make the newsletter what it is — a reflection of your active RV lifestyles, your willingness to share ideas, and above all, our desire to meet socially at luncheons, dinners, and rallies.

Make a New Year's resolution to contribute to your newsletter this year. Your Teton friends really do want to hear from you.

GEORGE HOOPER, EDITOR

THANKS TO 2004 CONTRIBUTORS:

Mike and Mary Anderson #1230
Steve Bates #1104
Joe and Darlene Betz #130
Jack and Gwen Birchall #792
David and Lorna Brammell #1006
Ed and Nancy Bump #1147
John and Sharon Ess #900
Bill and Jacquita Davis #831
Ted Deaton # 64
Marty and Dee Diederich #533
Ina Ebert #950
Eddie and Bobbi Ezell #932
John and Bev Geldorf #683
Peter and Carole Gilfedder #64
Grace Gotimer #347
David and Dorothy Holmes #925
George and Kay Hooper #454
Virginia Hyde #865
Ed and Linda Ingram #1170
Marty and Rose Jenkins #727
Ed Johnson #1030
Nick Keller #0 (Teton Homes)
Anita and Bob Laws #876
Donald Lenc #615
Gary and Harriet Lonstein #975
David McGalliard #1075
Rick and Carol McHugh #401
Phil and Ann McMullin #583
Rich Meyer #923
Dick and Helen Miller #960
Terry and Cheryl Nance #1179
Flo and Norm Nordin #77
Marvin and Ruth Ranke, TCI #373
Wayne and Joan Ranks #708
Margaret Serafin #1116
Donald and Angi Siebert #838
Deborah Snyder #1016
Ed and Jimmie Fay Sullivan #408
Jim and Carol Turner #671
Earl and Nancy Weir #718
Don and Shirley Willard #1069
David Wohl #959
Denison and Colleen Woods #329

Convert Your Sleeper Couch



Figure 1— Do some preliminary measuring. I used masking tape to mark measurements.



Figure 2— This is the couch with the bed mechanism and the backrest removed. It is now ready to receive the storage box.



Figure 3— With the couch upside down, use a hammer if necessary to remove the "slide on" backrest.

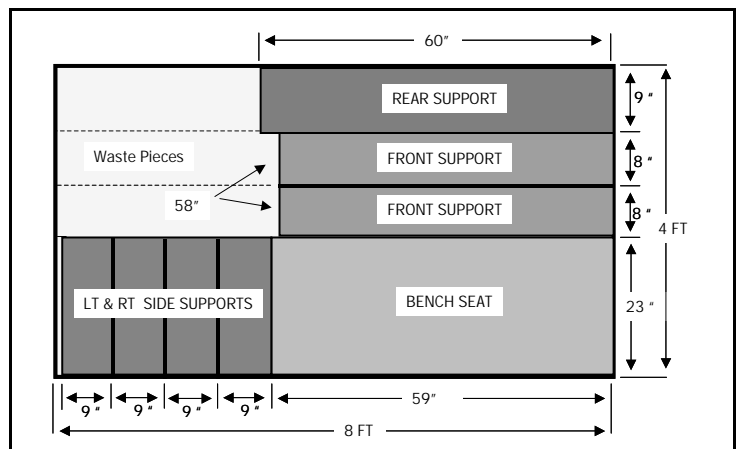
All three of our last Tetons have included "Hide-A-Bed" sleeper couches, and the nights slept on them comes to sum total of two. I used it one night and swore, "Never again!" Friends slept on it for a couple hours, then sat up for the rest of the night. With this in mind, we decided to gain more storage for Kay's sewing and cross stitching supplies by removing the fold out bed. The project cost about \$43.00 for a piece of 1/2 inch plywood, a five foot continuous (piano) hinge, a supply of 1 - 3/4" wood screw fasteners, spray glue and wood glue.

If you decide to undertake this project, you will need to do your own measuring and use my dimensions only as a guide, as there may well be differences between my couch and yours.

Step 1—Measure Carefully. Before you remove the bed mechanism, you need to do some preliminary measuring to determine the height of your bench seat. I measured the distance between the couch back and bed below. I also measured the thickness of the cushions. The goal is to have a bench seat that will hold your cushions snugly between the back rest and the bench. For my couch, the measurement was 9 3/4" from the frame bottom. A second measurement, 23," from the couch front to the backrest, provided a bench that ended at the wooden framework supporting the backrest. This was 8 5/8" from the back of the couch (see figure 1). These measurements can be re-checked after you remove the bed.

Step 2—Remove Bed Mechanism. To remove the bed, first remove the cushions and mattress. Then tilt the couch to the front. You will see a series of screws on each side. Remove these and lift out the bed. Be careful where you hold it, the mechanism has many "pinch points" (see figure 2).

Step 3—Remove Backrest Although not absolutely necessary, the task is easier if you are able to remove the couch backrest. The backrest on my sleeper was merely pressed into place—no screws. The fit was so tight that I had to use a hammer to loosen the joints where the backrest slides down a peg on each side (see figure 3)



Project Layout uses one sheet of 1/2" plywood. Front and side supports are double thickness (1") glued together and screwed to the sides of the couch. Home Depot made all of the saw cuts.

To A Storage Compartment

Step 4—Attach Bench to Back .Most of the construction of the box was done outside on my picnic table/workbench. To start, I attached the 59 inch bench piece to the 60 inch box back, allowing a 1/2 inch overhang on each side. While turned upside down (see figure 4) the back section is placed on top of the bench piece so that it will support the bench when in place. Attach a continuous hinge to the back so that the bench will lift when in place.

Step 5 – Cover Bench Seat .To give the bench seat a finished look, and to protect the cushions and couch sides, you need to cover the seat. I removed the large plastic mattress support from the bed mechanism, cut it into pieces, and used it as a cover for the bench. Use spray adhesive glue. Be sure to wrap the covering around the edges of the bench plywood. (figures 5 & 6).

Step 6 – Attach Sides. Side sections are made by joining two pieces of plywood together. I used glue and a couple small screws to keep them together until being fastened into place in the couch. The sides should be one inch thick with 1/2 inch overlapping the bench seat. Glue and screw both sides to the back section (figure 6).

Step 7 – Attach Front Bench Support The two front support boards are glued and joined together as described above. Although originally cut at 58 inches, it may be necessary to do some trimming so that there will be enough room on each end for the sides to slip in. Center and mount the front piece in the couch with 1 3/4 inch screws.

Step 8 – Install Box in Couch Before putting the box in the couch, inspect the sides to determine where you will be able to screw into wood. If your measuring has been accurate, the box should fit in place. Screw it in place and re-attach the backrest.

Step 9 – Get Storage Containers. To save weight, the box has no bottom. Our last step was to visit Wal-Mart to purchase a large under bed storage container and some smaller plastic boxes. We now have plenty of storage for Kay's sewing supplies (figure 7).

GEORGE HOOPER #454



Figure 4 — Notice that the back extends the bench seat by 1/2 inch on each end and that the back sits on top of the bench seat when upside down.



Figure 5 — When mounted in place, the covered bench section provides an attractive and protecting surface.



Figure 6 — Both side sections are put in place and attached to the rear brace board.



Figure 7 — Finished storage box has plenty of room for plastic storage containers. A nylon strap was also added for ease in lifting the bench seat.

Holding Tank Treatment—Responses

We live in our 2003 Experience Sunrise fulltime but have not retired as of yet. We both have full-time jobs, plus we have G&L RV Specialties. This is our fun job working with winter and other RV folks.

We read both your articles on page 16 of the Newsletter about sensors and cleaning of the holding tank. We agree with "most" of what you had to say, but I would like to make a few comments.

We put on holding tank seminars for a lot of the winter folks and at rallies also. We sell and install Superflushers in grey and black tanks and sell a product called Sea-Zyme (odor eliminator/waste digester).

We've learned a lot of things from our seminars that we pass on. Most importantly, we promote the use of a bacteria/enzyme product (Sea-Zyme) for several reasons.

If people would stop buying and dumping most of the holding tank products in their tanks, they wouldn't get toxic sludge build-ups on the inside of the tank.

I've used a number of these products in the past while trying to eliminate odors. Nothing worked until we tried Sea-Zyme. It even works in the HOT South Texas summers and that's when the problem is the worst.

By throwing products with formaldehyde, chlorines and other chemicals like this into the holding tanks, that "kill" bacteria, is what creates a toxic sludge build-up.

What we recommend for cleaning out the tank while traveling is to use 1/3 cup "old blue original Dawn dish soap" and approximately 1/3 tank of water (grey & black). Bleach/Clorox kills bacteria and is hard on plastics and O'rings. We advise not to over-do the 1/3 cup of Dawn (we as humans tend to say well, if 1/3 will do 2/3 or 1 cup will do better) because if you do then there will be bubbles coming out the vent —Ha! This has happened.



A comment about sensors, I really feel it's a disgrace to the industry that the manufacturer's don't do a better job for this problem. It's like your article said, there is an after market product that works, why not install them at the factory? This is a problem that we address at all our seminars. How do you know if your tank is full if you don't have a straight drop? Gurgling is one way, another is after the flush a bubble appears over the toilet bowl hole, and that is very accurate. There is so much to know about our holding tank systems that dealers never tell.

Two reasons for this are: (1) they don't know and (2) they're really only interested in selling the next rig.

GARY & LINDA BAECKER #1236

We found the articles about taking care of our tanks interesting, however, my aunt just forwarded an article which makes me think people should avoid trying the "Heavy Duty Tank Cleaner" instructions. Even knowing you shouldn't mix bleach and ammonia I didn't pick up on this problem until I read the article!

TUDY & JAKE JACOBSON # 1041

The article Tudy and Jake included with their email told the story of a camper who allegedly poured a quantity of bleach into a 1/4 full blackwater tank that had been sitting for two weeks. According to the narrative, the result was sewage exploding out the roof vent as well as burning sinuses. While I have been unable to verify that mixing bleach and urine (ammonia) is explosive, Tudy and Jake are right to caution us about mixing these two chemicals. If you decide to try the probe cleaning formula offered in the November issue, be sure to follow step one, "Empty the holding tank and rinse it the best you can."

EDITOR



Recognize this place? It's what we lovingly call, "Camp Teton." This is the service parking and camping area at Teton Homes. James & Charlotte Andress #1091 took this photo as they were waiting to pick up their new Teton RV. Looks like there's no waiting for service!

For Sale

'87 International 1600 Series RV hauler DT466 engine. 5 spd manual trans. 2 spd rear. 152K miles. 22.5 tires. Many extras. Asking \$34,300

Call Jeff Clague 530-941-4191

'02 Teton 40' Tucson XT3 Royal w/ Ultra leather section sofa, NAFCO flooring, Oak engraved valances 20.6 Amana side-by-air over hydraulic brakes, much more. Joe & JoAnn Hays #1060 joe@joehays.com 303-906-5999

'96 SFO-III Royal Ind susp, arctic pkg, W/D, dishwasher, ice maker etc, The trailer is used but I have brought it up to spec. Asking \$38,000.

Also , truck for sale w/Trailer Saver Hitch— may be sold with the Teton, but not without. Photos avail. Call 605-745-7983 Bill Parman #1180

RV Salvage Yards

Looking for one of those hard to find RV parts for an older unit? Here is some of the information on one that offer some real bargains. It is the best one that I have found so far.

Bontrager's Surplus Inc.
18719 U.S. 12

White Pigeon, MI 49009

They are located 2 1/2 miles east of the town of White Pigeon on U.S. 12.

Phone # 269-7017

Fax 483-7786

www.bontragers.com

They are open Monday through Friday 9:00 AM to 5:00 PM.

Sundays 12:00 to 4:00 pm

Closed on Saturdays.

I just picked up an electric 3 step for \$120.00 to fit on my trailer. There are several more surplus yards located in Elkhart, Indiana. However, Bontragers is the largest and usually has the best bargains.

DENNIS AND KATHY INMAN #1184

Fly "Old Glory" At Your Campsite - Build A Flagpole



Plastic pipe drops down over metal rod and chrome ring.

Want to display an American Flag when you camp, but don't want to carry a huge flagpole? Perhaps this will solve your problem. I saw this set up in Altoona, IA. It is a neat portable flag pole and it cost less than \$20. I copied it, and it gets a lot of attention. It is very portable and handles the wind well. You will need . . .

- One 12' PVC Schedule 40; Cut into two 4' and two 2' pieces.
- One elbow, one "T", two end caps
- One 4' metal rod (rebar, cold rolled steel, etc.)
- One chrome plumbing cap
- Two 2 & 1/4" eye bolts with four washers and two nuts.
- One flag

Assembly is simple, and with no gluing, it come apart easy for storage.

CHARLES BARTLETT #1158



Chrome trim ring allows pole to swivel



COME ONE, COME ALL TO BOSTON IN '05

FOR THE 16TH ANNUAL TETON CLUB INTERNATIONAL RALLY
September 16 – 22, 2005

**Normandy Farms Family
Camping Resort**
72 West St.
Foxboro, MA 02035

Directions: I-495 to exit 14A.
Take Route 1 North 1 mile to
2nd traffic light. Turn right onto
Thurston Street. Normandy
Farms is 1.4 miles on right.

Questions? Contact:
Peter & Carole Gilfedder
PO Box 866
Sanbornville, NH 03872-0866

603-522-3598 NH (Summer)
239-774-7975 Florida (Winter)
Email gilfedder@netzero.net
(Works when we're in NH or FL)

Registration Notes: Contact
the campground directly at 1-
508-543-7600 for pre-rally
and/or post rally space. Identify
yourself as a TCI member for a
20% per night discount.

Optional Tours:

The Mansions of Newport, RI. (The Breakers & Marble House),
plus oceanfront drive. Lunch on your own at the Waterfront area.
Approximately 7 hrs. Cost \$39.00 per person, with a 35-person
minimum to run this tour.

The Island of Nantucket, Massachusetts. Truck pool to Hyannis,
High-speed ferry to and from Nantucket, lunch on your own.
Cost \$54.00 per person (Note: There will be a \$15.00 per
vehicle parking fee, payable when you park at the dock).

Rally Package Includes . . .

- ◆ Guided Tour of Boston, Cambridge,
Concord & Lexington
- ◆ Tour Plimoth Plantation & Mayflower II
- ◆ 6 Breakfasts
- ◆ 1 Lunch
- ◆ 3 Dinners
- ◆ 7 Nights Full Hookup Camping Long
Pull-Through Sites

REGISTRATION DEADLINE: AUGUST 5, 2005

NAME: LAST _____ FIRST _____ SPOUSE/COMPANION _____

ADDRESS _____ E-MAIL ADDRESS _____

CITY _____ STATE _____ ZIP _____ TCI # _____

NUMBER OF ADULTS _____ NUMBER OF GUESTS _____ PHONE _____

THIS RALLY WILL BE THE (ENTER NUMBER) _____ *INTERNATIONAL* RALLY WE HAVE ATTENDED.

DO YOU REQUIRE ANYTHING SPECIAL DUE TO HEALTH OR OTHER CONCERNS? _____

COST: \$625.00 PER RIG (2 PEOPLE) \$267.50 EACH EXTRA PERSON \$437.50 PER RIG WITH 1 PERSON

NOTES: Make out your check to TCI International (U.S. Funds). Partial payments accepted as long as final payment is made by deadline. Registrations received after 8/5/05 may be in a different part of the campground, or on water and electric sites with no sewer.

BASIC RALLY FEE: _____ **+ MANSION TOUR** _____ **+ NANTUCKET TOUR** _____ **= AMOUNT ENCLOSED:** _____

ALL PARTICIPANTS MUST SIGN THE FOLLOWING:

The undersigned hereby releases and agrees to indemnify and hold harmless Teton Club International Club officers of any and all liabilities, claims, losses, damages, injuries and reasonable attorney fees which may rise as a result from, or relate to this rally; or the negligence, omissions or lack of care of its officers during the time period specified above. Cancellation in accordance with TCI by-laws.

Signature: _____ Date: _____

Signature: _____ Date: _____

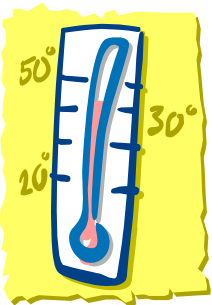
MAIL TO: Ed Sullivan, Sec/Treas
19504 John Stafford Rd.
Walker, LA 70785

The Tale of the "Amana Defrost"

As "newbies" to living full-time in our 2004 Reliance Teton, we realized from our first hour of ownership that we had **a lot to learn**. Over the past four months, Ed and I had surmounted towing, parking, setting up, tearing down, dumping, flushing, etc.

Giving our Amana refrigerator tender-loving care, we were shocked to find a major defrost occurring one morning this October. Fortunately, Ed had convinced me that we needed to purchase a "pricey" Radio Shack thermometer and three remote sensors just like Charles and Rae Bartlett, who we met at "Camp Teton" in May. I thought--another tech toy! Ed wanted to be able to check the temperature of the freezer, refrigerator, ambient indoors and ambient outdoor. "You never know when a problem could develop with the refrigerator or hell might begin to freeze over," he said.

So for months, Ed has been checking between remote sensors and quoting temperatures, such as, the lowest and highest temperatures of the freezer within an eight hour period. I would think "So what? Do I really care?"



On the day of the "Amana Defrost," I discovered frost and mushy ice cream in the freezer. Ed immediately checked the Radio Shack thermometer and discovered the freezer was up to

28 degrees and the refrigerator up to 51 degrees. Panic Time! Immediate action had to be taken! With the help of Joe and Darlene Betz, we redistributed some cold food to their refrigerator and the frozen food to the campground's ice cream freezer. By keeping bags of ice in the refrigerator to chill the remaining cold food, we were able to maintain a 50 degree temperature for the week, according to our Radio Shack thermometer.

When the Amana serviceman arrived, he quickly announced that he would not touch the refrigerator until it was moved out of the Teton cabinet. The back had to be accessible!

"The Amana serviceman . . . announced that he would not touch the refrigerator until it was moved out of the Teton cabinet."

After much deliberation, and several hundred minutes of cell phone time, Ed, Joe, and Fred Riedel rolled the refrigerator out of the Teton cabinet and onto a 4ft by 4ft plywood platform. This was no easy task! It required the floor of the cabinet above the refrigerator to be removed in order to detach restraining straps that held the refrigerator in position. It required removing the bottom front trim plate, and required rolling the refrigerator onto the plywood platform because the refrigerator sits two inches above the floor.

Now the Amana serviceman was able to squeeze behind the refrigerator to evaluate the problem. Within an hour, the relay to the compressor was replaced and the refrigerator (according to our Radio Shack thermometer) was cooling down. Rejoice! With alignment modifications, and additional metal braces at the wheels, the refrigerator was re-mounted into the Teton Cabinet.

After sopping up excess water in the refrigerator, we gathered our cold food from the Betz's, and the frozen food from the campground office. Now we were operational again, and a cold chill began to settle upon our warm lettuce leaves.

To our surprise, two days later, the "Amana Defrost" **returned!** At 6 AM, the Radio Shack thermometer announced that the temperature was rising, and our ice cream was in serious peril.

Once again, we raced our frozen

food to the campground ice cream freezer, the cold food to the Betz's, and a bag of ice in the refrigerator to keep the hot dogs from turning green. Next we called the Amana serviceman and once again removed the refrigerator from the Teton cabinet.

As you guessed, the Amana serviceman declared the compressor dead, and our refrigerator in need of immediate transplant surgery. The surgery took four anxious hours (messy, smelly, loud). But after eight days of enduring the "Amana Defrost" nightmare, we were finally frosting lettuce again.

We learned a lot from our "Amana Defrost"—Blessings come in many forms, including Radio Shack thermometers, remote sensors, and our Teton family of friends. By the way, Ed says the Radio Shack thermometer has not yet indicated that Satan is looking for a sweater.

ED AND LINDA INGRAM TCI#1170



Future Rallymasters

We are starting a thread on our website forum where rally organizers could post the dates for their rallies. As soon as you know when you will hold a future rally, please post it on the forum, or send me an email at:

webmaster@tetoners.org.

TERRY NANCE, WEBMASTER

Ne Regional News



NORTHEAST REGION RALLY Grand Haven, Michigan May 18 to May 22, 2005

Join us for a "Taste of Holland" in America!

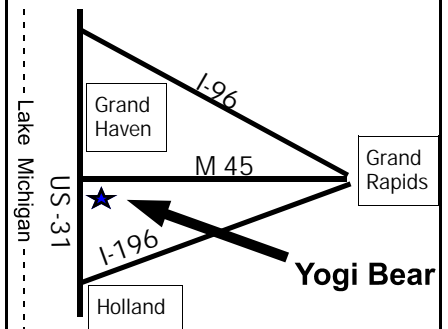
RALLY INCLUDES

- ◆ 4 Nights full-hookups W/50A for early reservations, 30A for late.
- ◆ 4 Continental Breakfasts
- ◆ 2 Lunches
- ◆ 3 Dinners
- ◆ Convoy trip to Gerald Ford Museum and Van Andel Museum and Planetarium in Grand Rapids. Includes lunch at museum.
- ◆ Visit old fashioned Dutch Village in Holland—Includes wooden shoe carving, Klompen dance group, delftware demonstration, and lunch nearby.
- ◆ Boat cruise on Kalamazoo River to Lake Michigan on the Star of Saugatuck.
- ◆ Visit Windmill Island for spring tulip time and a nostalgic trip back to old Holland.
- ◆ Time for self-guided visit to downtown Historic Holland for shopping, viewing tulip beds, and more.

CAMPING:

Yogi-Bear Campground
10990 U.S. Rte. 31
Grand Haven, MI
616-842-9395

Directions: From the junction of U. S. 31 and M-45, go south 1/3 mile to park on left



NAME: LAST _____ FIRST _____ SPOUSE /COMPANION _____
 ADDRESS _____
 CITY _____ STATE _____ ZIP _____ TCI NUMBER _____
 NUMBER OF ADULTS _____ NUMBER OF GUESTS _____ TOW VEHICLE _____
 TRAILER MODEL _____ TRAILER LENGTH _____ PHONE: _____ EMAIL: _____
 DO YOU REQUIRE ANYTHING SPECIAL DUE TO HEALTH OR OTHER CONCERNS? _____

COST: \$400.00 PER RIG (2 PEOPLE), \$150.00 EACH EXTRA PERSON & \$270.00 PER RIG WITH 1 PERSON.

Mail to your Rally Hosts:
Gary & Harriet Lonstein #975
1933 Sunflower Circle
Sebring, FL 33872

Make out your check to TCI
Northeast Region (U.S. Funds).
Mail to Gary Lonstein

Questions?
Phone: 863-386-0963
Cell: 914-799-0137

ALL PARTICIPANTS MUST SIGN THE FOLLOWING:

The undersigned hereby releases and agrees to indemnify and hold harmless, Teton Club International and regional officers of any and all liabilities, claims, losses, damages, injuries and reasonable attorney fees which may rise as a result from, or relate to this rally; or the negligence, omissions or lack of care of its officers during the time period specified above. Cancellation in accordance with TCI by-laws.

Signature: _____ Date: _____

Signature: _____ Date: _____

PLEASE RESPOND BY APRIL 4, 2005

Welcome New Members

TCI# 1249
John & Karin Bradley
P O Box 820965
North Richland Hills, TX 76182-0965
817-239-0544

TCI# 1250
Virgil & Pamela Francis
PO Box 81
Helotes, TX 78203
210-313-3533

TCI# 1251
Peter & Ronda Craemer
1102 SE Eagle Lane
Gresham, OR 97080
503-351-3096

TCI# 1252
Edwin & Kathleen Depukat
153 Rainbow Dr. PMB 5335
Livingston, TX 77399-1053
775-232-8688

TCI# 1253
Earl & Joan Faught
7957 Ruth Way
Riverside, CA 92506
951-780-3298

TCI# 1254
Maurice & Michele Dextras
3700 South Westport Ave #1604
Sioux Falls, SD 57106-6360
719-650-7669

TCI# 1255
Jerry & Margaret Upshaw
215 Teakwood Lane
Woodstock, GA 30188-2050
770-924-2482

TCI# 1256
Melvin & Sandra Lutjemeier
P O Box 301175
Portland, OR 97294
503-286-0390

TCI# 1257
Doug & Deaon Titus
660 George St.
Hartford, IA 50118
515-989-0390

TCI# 1258
Barbara Humphreys & Jean Nolet
PO Box 7795
Stockton, CA 95267
209-931-4165

TCI# 1259
Fred & Lorraine Ainsworth
3 James Ave.
Bloomsburg, PA 17815
908-334-3531

TCI# 1260
Robert & Phyllis Demchick
3700 S Westport Ave. #913
Sioux Falls, SD 57106-6360
610-212-4233

TCI# 1261
Roy & Maureen Hessey
4000 SE 82nd Ave Suite 1000 #62
Portland, OR 97266
858-717-1773

TCI# 1262
Ronald & Sharon Keller
2826 SW Brixton Ave
Gresham, OR 97080
503-661-2291

TCI# 1263
Carl & Cherie Forsythe
1200 Louisville Hwy
Goodlettsville, TN 37072
615-604-3315

TCI# 1264
Brent & Shirley Cronebach
136 S. Fairview Ave
Dover, OH 44622
330-340-7104

TCI# 1265
Carl & Tanya Strozewski
8301 Blue Creek Rd.
Billings, MT 59101
406-252-1496

TCI# 1266
Lloyd & Ruth Long
P O Box 20904
Cheyenne, WY 82003
307-421-9705

TCI# 1267
Al & Cheryl Exum
1125 Slate Rock Road
Dallas, TX 75119
972-846-2272

TCI# 1268
Larry & Cheryl Rupe
2301 E. Hwy 163
Columbia, MO 65201
573-289-1578

TCI# 1269
Gail & Bonnie Quinn
3700 South Westport Ave PMB 962
Sioux Falls, SD 57106-6360
608-215-6410

TCI# 1270
Frank & Linda Novosel
PO Box 563
Spicewood, TX 78669
512-632-1430

TCI# 1271
David & Sue McCarron
196 Rainbow Dr., PMB 9614
Livingston, TX 77399-1096
707-628-5761

TCI# 1272
Jesse & Donna Fuller
PO Box 1003
Clarendon, TX 79226
806-676-1159

TCI# 1273
Jimmy & Linda Williams
PO Box 309
Vanderbilt, TX 77991
361-564-8743

TCI# 1274
Bruce & Cathy Sutta
227 Chinkapin Lane
Monroe, NC 28110
704-618-7877

TCI# 1275
Edgar & Mary Bomar
PO Box 248
Wartrace, TN 37183
931-808-1533

TCI# 1276
Sam Zimmerman
33977 Grouse Dr.
Sioux City, IA 51108
712-239-4074

TCI# 1277
Eddie & Esther Sauer
3700 Westport Ave. #1371
Sioux Falls, SD 57106
805-714-5832

TCI# 1278
James & Shirley Jones
340 E. Economy Drive #186
Morristown, TN 37814
423-312-5644

TCI# 1279
Joe & Sandy Haskins
2705 Peach Lane
Pasadena, TX 77502
713-947-1017

TCI# 1280
Jim & Pat McMahon
26397 Redlands Blvd
Redlands, CA 92373
909-428-3893

TCI# 1281
Clifford & Judith Hickman
PO Box 5
Aguanga, CA 92536
951-767-3230

TCI# 1282
Michael & Julie Grant
PO Box 654
Aguanga, CA 92536
951-767-2377

TCI# 1283
Rolland & Theresa Zwickl
P.O. Box 473
Aguanga, CA 92536
951-767-3424

TCI# 1284
Paul & Carole Robinson
62 E. Arthur Ave.
Arcadia, CA 91006
626-512-4014

TCI# 1285
Eugene & Linda Grabill
21 Grace Ave.
Hanover, PA 17331
443-398-6161

TCI# 1286
Walt & Lavonne Sullivan
3730 NW Brickyard Rd.
Topeka, KS 66618
785-286-2237

TCI# 1287
Dennis & Jacki Dunne
P. O. Box 1418
Sarasota, FL 34230
408-858-1282

TCI# 1288
Stanley & Patsy Jeglum
19770 Ponderosa Drive
Volcano, CA 95689
209-296-1645

TCI# 1289
Richard & Susan Helmenstine
23316 Redmond-Fall City Rd. #501
Redmond, WA 98053
206-618-7766

TCI# 1290
Richard & Pamela Livingston
217 Rainbow Drive #11768
Livingston, TX 77399
916-802-6361

TCI# 1291
Robert & Linda Eppstein
P. O. Box 3047 Eleven Antelope Lane
Sun River, OR 97707-0047
541-593-7474

TCI# 1292
Howard & Laurie Lang
7036 S. Miller Ct.
Littleton, CO 80127
303-972-0078

TCI# 1293
Harb & Marlene Androm
1400 Colo St. #C
Boulder City, NV 89005-248
330-705-9312

TCI# 1294
Ronald & Norma Woodward
112 Rainbow Dr., #1247
Livingston, TX 77399-1012
703-608-5171

TCI# 1295
Don & Twila Wood
830 Doverlee Dr.
Santa Maria, CA 93455
805-934-1072

TCI# 1296
Richard & Patricia Sjolín
209 Rainbow Dr., #10944
Livingston, TX 77399
503-349-7111

TCI# 1297
Daryl & Ana Baisley
1012 Wellington Road
San Dimas, CA 91773
626-915-1027

TCI# 1298
Robert & Deborah Keller
42837 SD Hwy 42 #661
Emery, SD 57332
410-707-8612

se Regional News



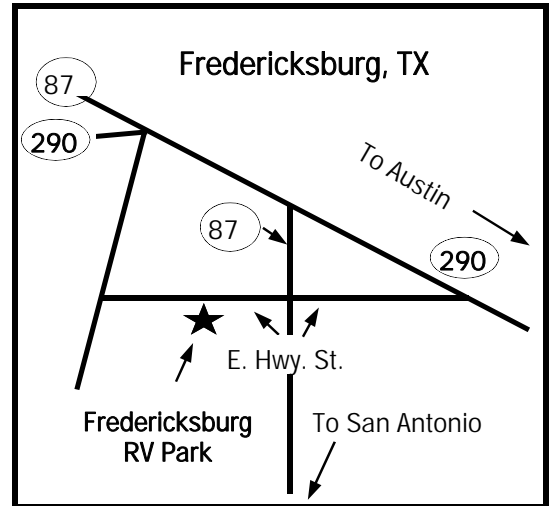
SOUTHEAST REGION RALLY

Fredericksburg, Texas

April 24-29, 2005

RALLY PACKAGE INCLUDES

- ◆ 5 nights camping
- ◆ National Museum of the Pacific War Luckenbach, TX (if show available during rally).
- ◆ LBJ Ranch tour and park
- ◆ Wildseed Farms
- ◆ Breakfast each Morning
- ◆ 1 Lunch
- ◆ German dinner
- ◆ Texas dinner
- ◆ Fish fry



From jct. of US 290 & E Hwy St. W 1.1 mi on E Hwy St. — From SR 16 & E Hwy St. E 1/2 mi.

NAME: Last _____ First _____ Spouse /Companion _____
 Address _____
 City _____ State _____ ZIP _____ TCI Number _____
 Number of Adults _____ Number of guests _____ Tow Vehicle _____
 Trailer Model _____ Trailer Length _____ Email _____

Do you require anything special due to health or other concerns? _____

Cost: \$300 Per Rig (2 People) \$200 Per Rig (1 Person) \$105 Extra Person (in your rig)
 Make out your check to Southeast TCI Region (U.S. Funds).

\$21 rate available two days prior and two days after the rally. Call Fredericksburg RV Park at 866-324-7275 for these reservations.

Mail Your Application To:

Marvin Ranke, Treasurer
 208 Rainbow Dr. PMB 10850
 Livingston, TX 77399-2008

Questions?

Contact Earl & Nancy Weir #718
 540-273-0136 or e-mail @
wearlnancy@aol.com

ALL PARTICIPANTS MUST SIGN THE FOLLOWING:

The undersigned hereby releases and agrees to indemnify and hold harmless, Teton Club International and regional officers of any and all liabilities, claims, losses, damages, injuries and reasonable attorney fees which may rise as a result from, or relate to this rally; or the negligence, omissions or lack of care of its officers during the time period specified above. Cancellation in accordance with TCI by-laws.

Signature: _____ Date: _____

Signature: _____ Date: _____

Please Respond By March 20, 2005

NW Regional News



2005 NORTHWEST REGION RALLY Cashmere, Washington

July 4 to July 10, 2005

Your rally hosts: Flo and Norm Nordin invite you to come and enjoy old friends and make new friends at the CHELAN COUNTY FAIRGROUNDS, known for its expansive lawns and beautiful views of Mount Cashmere. Visit Leavenworth and the beautiful Wenatchee Valley.

RALLY FEE INCLUDES

- ◆ 7 nights, Full Hook-Ups, 50 Amps
- ◆ 3 Light Breakfasts
- ◆ 3 Lunches
- ◆ 3 Dinners
- ◆ An Evening Hayride and BBQ
- ◆ Bus Tours of: Ohme Gardens, Rocky Reach Dam & Fruit Packing Plant (Lunch Included)
- ◆ Tour of Pioneer Village

OPTIONAL BOAT TRIP: LADY OF THE LAKE II:

\$28.00 pp round trip.
8:30AM leave Chelan boat dock
6:00PM Return to boat dock
(Minimum 20 needed)

Directions: From Interstate 5: East on Hwy 2 to Apleto Way (MP 111). Right at signal. Look for signs to fairgrounds. OR Westbound: on Hwy 2 Cotlets Way (MP 112) through town. Look for signs to fairgrounds. Hwy 2 is North of I-90.

NAME: Last _____ First _____ Spouse /Companion _____

Address _____ Email Address _____

City _____ State _____ ZIP _____ TCI Number _____

Number of People _____ Guests _____ Total in Party _____ Telephone _____ Trailer Length _____

Do you require anything special due to health or other concerns? _____

Cost: \$396 Per Rig (2 People) \$275 Per Rig (1 Person) \$132 Extra Person (in your rig)

Amount Enclosed: Rally Fee _____ + Optional Boat Trip _____ = Amount Enclosed _____

Mail Your Application To:

Deb Snyder
27013 Pacific Highway South #219
Des Moines, WA 98198

Make out your check to TCI Northwest Region (U.S. Funds).

For Information:

Contact Norm or Flo Nordin
760-630-7343 or 760-445-5845
Normflo1@juno.com

ALL PARTICIPANTS MUST SIGN THE FOLLOWING:

The undersigned hereby releases and agrees to indemnify and hold harmless, Teton Club International and regional officers of any and all liabilities, claims, losses, damages, injuries and reasonable attorney fees which may rise as a result from, or relate to this rally; or the negligence, omissions or lack of care of its officers during the time period specified above. Cancellation in accordance with TCI by-laws.

Signature: _____ Date: _____

Signature: _____ Date: _____

Please Respond By May 15, 2005

Regional News

Southern California Holiday Luncheon

A Ho Ho Ho, 2 Happy Birthdays, & a Hearty Meal was had by all of the 27 attendees on Dec. 7, at Pala Casino. Our birthday "Kids" were Ralph Hankinson 12/7 and Sharon Ess 12/8.

Our attendees who enjoyed the occasion were Norm Rentle, Dugal & Bette Purdom, Norm & Flo Nordin, John & Sharon Ess, and Sharon's lovely Mother, (John is working for Altmans RV for the winter selling Teton) Marty & Dee Deiderich, Roy & Deb Snyder, Ralph & Mary Hankinson, Larry & Doris Mills, Dick and Kathy Dickinson, Dave and Debbie Stokes, Ron & Michelle Hobill, Earnie & Sandy Lovegren, Richard & Pam Livingston (they only had their Teton a week) and Henrietta Newton, a Teton owner and Sales rep. from Altmans RV.

A Special Thank You to Altmans for donating 5 gift boxes... We drew for the lucky winners... A great time was had by all and it is always fun to meet new people and renew old friendships.

FLO NORDIN #77



Medora Musical and Pitchfork Dinner

I forgot to let you know that I MUST have commitments No Later than March 30th, 2005. This will qualify us for the group discount rate. Mark your calendar: Sunday, July 17th, 2005 for great entertainment. The Medora Musical and Pitchfork dinner. Group price: Dinner \$18.25, Show \$24.65, Total for two persons: \$85.80

A deposit of \$50.00 is requested, and final payment is due no later than May 15th. Please send all monies to Flora Nordin, 1970 No. Leslie St. #2081, Pahump, NV. 89060-3678.

For additional information call Flo Nordin 760-630-7343 or 760-445-5845 cell. If we do not get at least 25 persons, we will have to cancel, so please give me a call.

FLO NORDIN #77

Northwest Rally 2005 Update

Are you ready for friends, fun, food, and free time?

Sign up now—Our plans are being finalized. Don't miss out and remember, bring your friends. They are welcome. If you meet or know of any Tetoners, past present or future please invite them to join us as your guest.

Should you wish to come into the Cashmere rally site a day or two early, the fee is \$18.00 per night, payable on arrival. Sites should be available (as far as I know) beginning Sat. July 2nd. Please contact Flo Nordin via phone or e-mail to confirm.

Our charity for this rally will be Women's Resource Center. They handle approximately 2000 families a year in the area and are in need of just about everything. Hopefully we can fill at least two "Tubs of Love" with personal hygiene products, (toothbrushes, soap, shampoo, skin cream, etc), disposable diapers, canned foods, cereal, blankets, clothes, everything is needed. If you plan to be in the area for a while, they also can use help painting, fixing, whatever. This is a great way for us to share with those who need a little help. We will also have a few baskets, to auction off, the proceeds will also be donated.

Please make your reservations early. We need a guarantee for the tour bus.

FLO NORDIN #77

Southwest Rally April 2005 Update

Our rally will be held at the Oasis Las Vegas Resort, April 18-24, 2005..

Come join us for a fun filled rally, lots of good friends, good food, and activities most Las Vegas visitors miss.

Those planning to attend must submit their application and payment before March 15, 2005. A block of thirty (30) prime pull through spaces have been reserved and will be assigned in the order that applications are received.

Arriving Early or Staying After? Arrangements have been made for those who wish to arrive early, or stay after the rally. You may stay up to seven days, at the rally rate of \$23.75 per day and must make your own reservations with the Oasis Las Vegas Resort (800-566-4707). Be sure to advise reservations that you are attending the Teton Rally to receive the discount rate. Those planning to arrive early should inform the Rallymaster by email or phone to insure proper space assignment, Email: rgm53hmm@aol.com or 702-837-9369 - cell 702-682-0121 We look forward to seeing you in Las Vegas.

DICK & HELEN MILLER #960

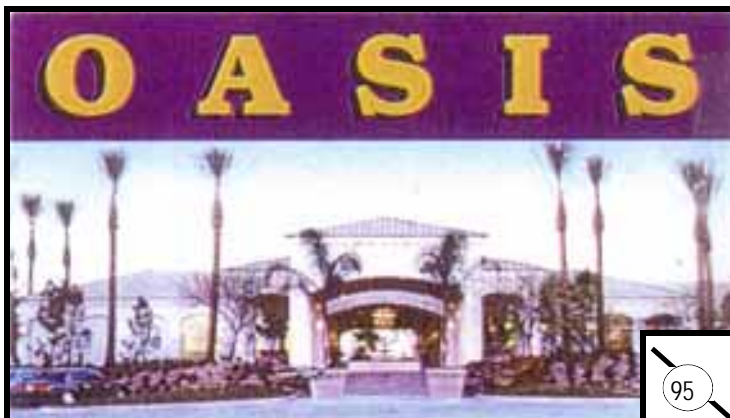


Regional News

2005 Southwest Region Rally – Las Vegas, Nevada

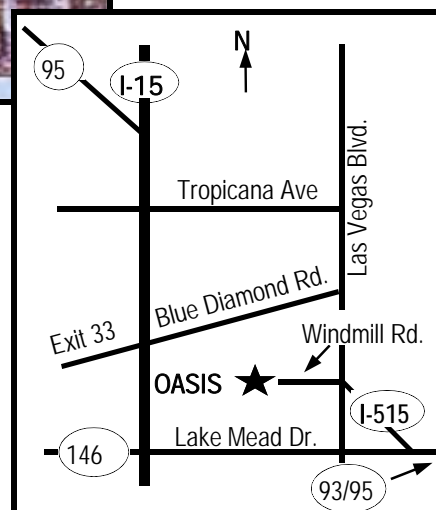
April 18–24, 2005

Six Nights at the Oasis Las Vegas Resort



Events & Activities Being Planned include:

- ◆ Meals
- ◆ Red Rock Canyon Tour/Picnic
- ◆ Madam Tussaud's Wax Museum
- ◆ Liberace Museum Tour
- ◆ Miniature Golf Tournament w/ prizes and BBQ dinner
- ◆ Ron Lee Clown Factory
- ◆ Ethel M Candy Factory w/ Cactus Garden Tour
- ◆ Las Vegas Show (subject to cost and availability)
- ◆ Seminars



NAME: Last _____ First _____ Spouse /Companion _____

Address _____ Email _____

City _____ State _____ ZIP _____ TCI Number _____

Guest _____ Total Number in Party _____ Telephone _____

Do you require anything special due to health or other concerns? _____

Cost: \$400 Per Rig (2 People)

\$290 Per Rig (1 Person)

\$140 Extra Person (in your rig)

Mail Your Application To:

Jacquita Davis
213 Rainbow Dr. #11366
Livingston, TX 77399-2013

Rallymaster: Dick & Helen Miller #960
Henderson, Nevada
702-837-9369 or 702-682-0121 (cell)

Make Checks Payable to:

TCI Southwest Region
(US Funds Please)

ALL PARTICIPANTS MUST SIGN THE FOLLOWING:

The undersigned hereby releases and agrees to indemnify and hold harmless, Teton Club International and regional officers of any and all liabilities, claims, losses, damages, injuries and reasonable attorney fees which may rise as a result from, or relate to this rally; or the negligence, omissions or lack of care of its officers during the time period specified above. Cancellation in accordance with TCI by-laws.

Signature: _____ Date: _____

Signature: _____ Date: _____

Please Respond By March 15, 2005

Regional Club Membership Dues Form 2005

(Must be a member of Teton Club International)

Please fill out the membership dues form below, and send your check for \$10.00 to the treasurer for the region you are joining. Duplicate the form, or include the information below on a sheet of paper, for more than one region.

LAST NAME _____ FIRST _____ SPOUSE /COMPANION _____

ADDRESS _____

CITY _____ STATE/PROVINCE _____ ZIP _____

TCI NUMBER _____ TELEPHONE _____ EMAIL _____

TETON MODEL/YEAR _____ REGION JOINING _____ AMOUNT ENCLOSED _____

MAKE CHECK PAYABLE TO: (FILL IN AREA) REGION TCI (Example: Southwest Region TCI)

MAIL TO:

Northeast Region:

Gary Lonstein #975
1933 Sunflower Circle
Sebring, FL 33872

Southeast Region:

Marv Ranke
208 Rainbow Dr. PMB 10850
Livingston, TX 77399-2008

Northwest Region:

Deb Snyder
27013 Pacific Highway South #219
Des Moines, IA, WA 98198

Southwest Region:

Jacquita Davis
213 Rainbow Dr. PMB 11366
Livingston, TX 77399-2013

George Hooper, TCI Editor
1407 Edmundshire Lane
Orlando, FL 32806

FIRST CLASS MAIL